

RESTAURANT BUILDING
FOR LEASE OR SALE

2005-07 W. Division St.
WICKER PARK - CHICAGO



CANVAS

WICKER PARK

Located at the South Block of Division between Damen and Hoyne

HIGHLIGHTS

- Prime retail/restaurant building along West Division Street in Wicker Park's vibrant restaurant corridor
- Sidewalk cafe capabilities fronting Division St. with operable storefront windows
- Existing black iron ventilation in place
- The real estate is offered for sale or lease. The business is not included in the sale

NEIGHBORHOOD RETAILERS

BOURBON
ON
DIVISION

Casa Tequila
- Mexican Grill & Cantina -

Colectivo
COFFEE

Easy
Cocktail Bar

LITTLE
WOK
chinese · sushi

PHODEGA

ST
Sushi Taku

velvet
goldmine

DEMOGRAPHICS



72.4k+

Total Population
1 Mile



\$186k+

Average HH Income
1 Mile



57.1k+

Daytime Population
1 Mile

SPACE AVAILABLE



4,008.59 sf
Ground Level



4,008.59 sf
Second Level

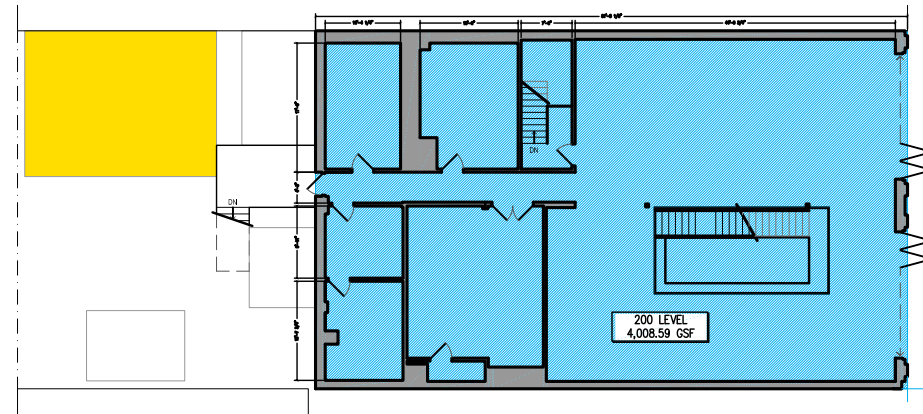


528.60 sf
Garage



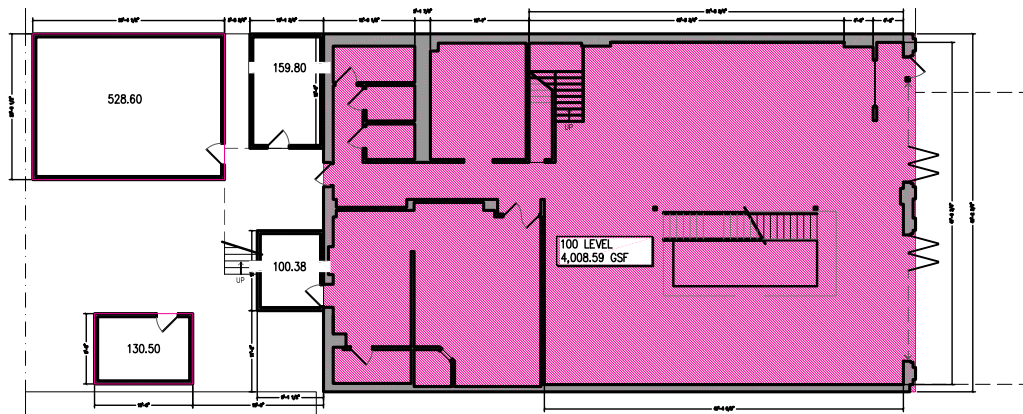
8,545.78 sf
Total

FLOOR PLAN

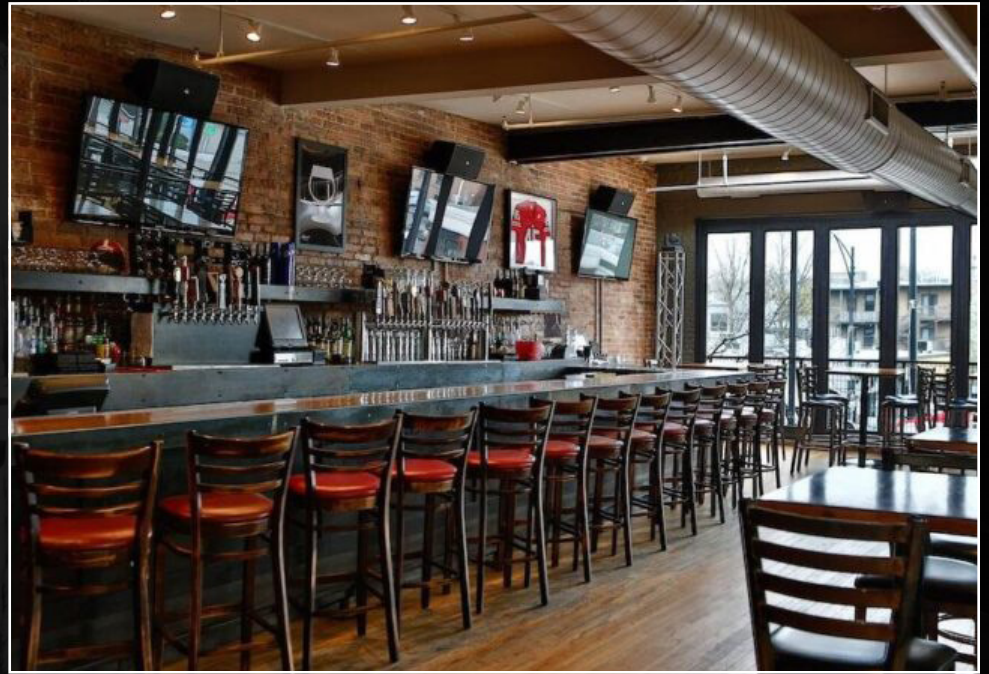
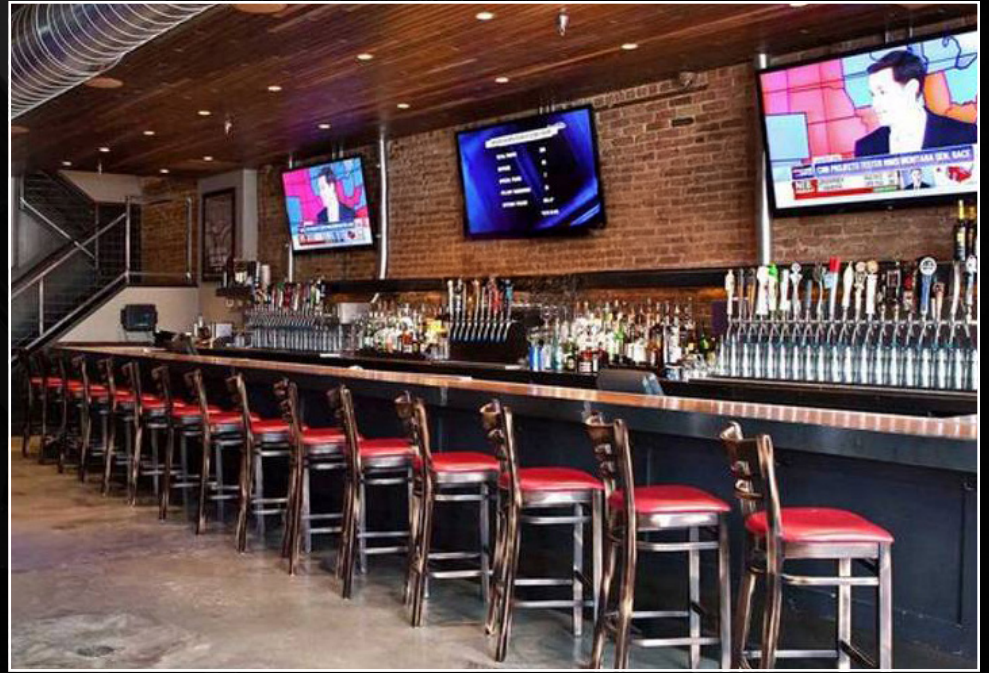
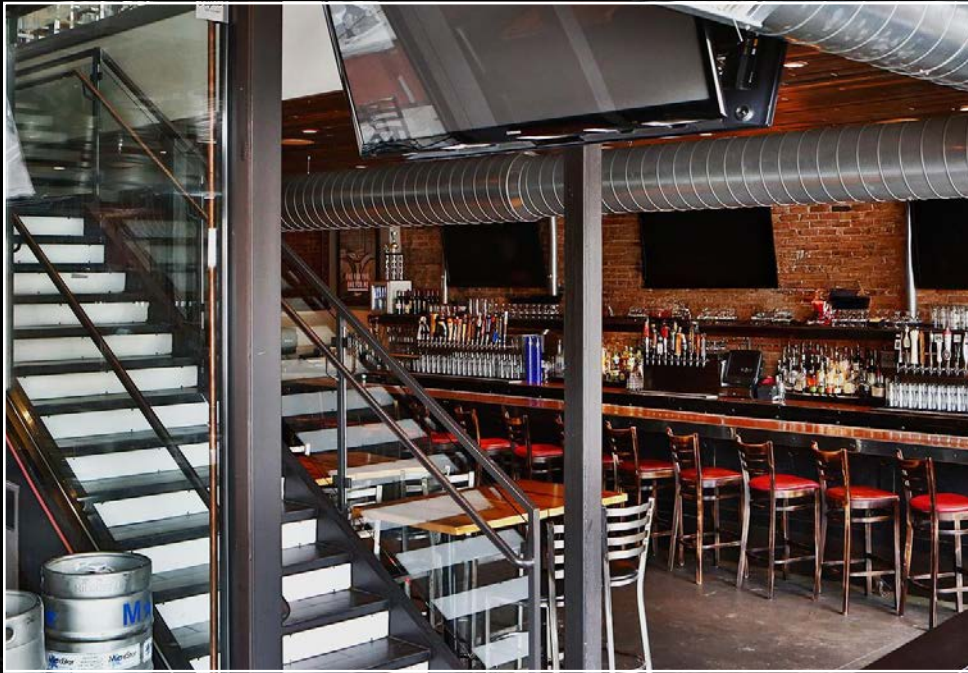


W. Division Street

GROUND LEVEL



SECOND LEVEL



CANVAS



FOR MORE INFORMATION, PLEASE CONTACT

ANTHONY CAMPAGNI
 ac@canvasrealestate.com
 847.651.8669

ELAN RASANSKY
 elan@canvasrealestate.com
 414.380.1555

QUINN THOMAS
 qthomas@canvasrealestate.com
 847.651.5589

CANVAS

2211 North Elston Avenue,
 Suite 307, Chicago
 www.canvasrealestate.com