



# 2459 W. Division Street CHICAGO, ILLINOIS

**Retail/Restaurant Space for Lease**  
Southeast corner of Division & Campbell

FOR MORE INFORMATION, PLEASE CONTACT

ANTHONY CAMPAGNI • 847.651.8669  
ac@canvasrealestate.com

ELAN RASANSKY • 414.380.1555  
elan@canvasrealestate.com

MICHAEL WALLACE • 614.537.2403  
mwallace@canvasrealestate.com



## DEMOGRAPHICS



**490k+**

Total Population  
3 Miles

200k+      61.6k+  
2 Miles      1 Mile



**\$157k+**

Average HH Income  
3 Miles

150k+      175k+  
2 Miles      1 Mile



**568k+**

Daytime Population  
3 Miles

181k+      48.6k+  
2 Miles      1 Mile



### HUMBOLDT PARK

- Approximately 6,000 sf available for lease.
- Space is divisible
- Located on the corner of W Division and N Campbell
- Less than half a mile to St Mary Of Nazareth Hospital
- Location is easily accessible from Wicker Park, Logan Square, and West Town

CANVAS

# SITE SURVEY

## SPACE AVAILABLE



**6,000<sup>sf</sup>**

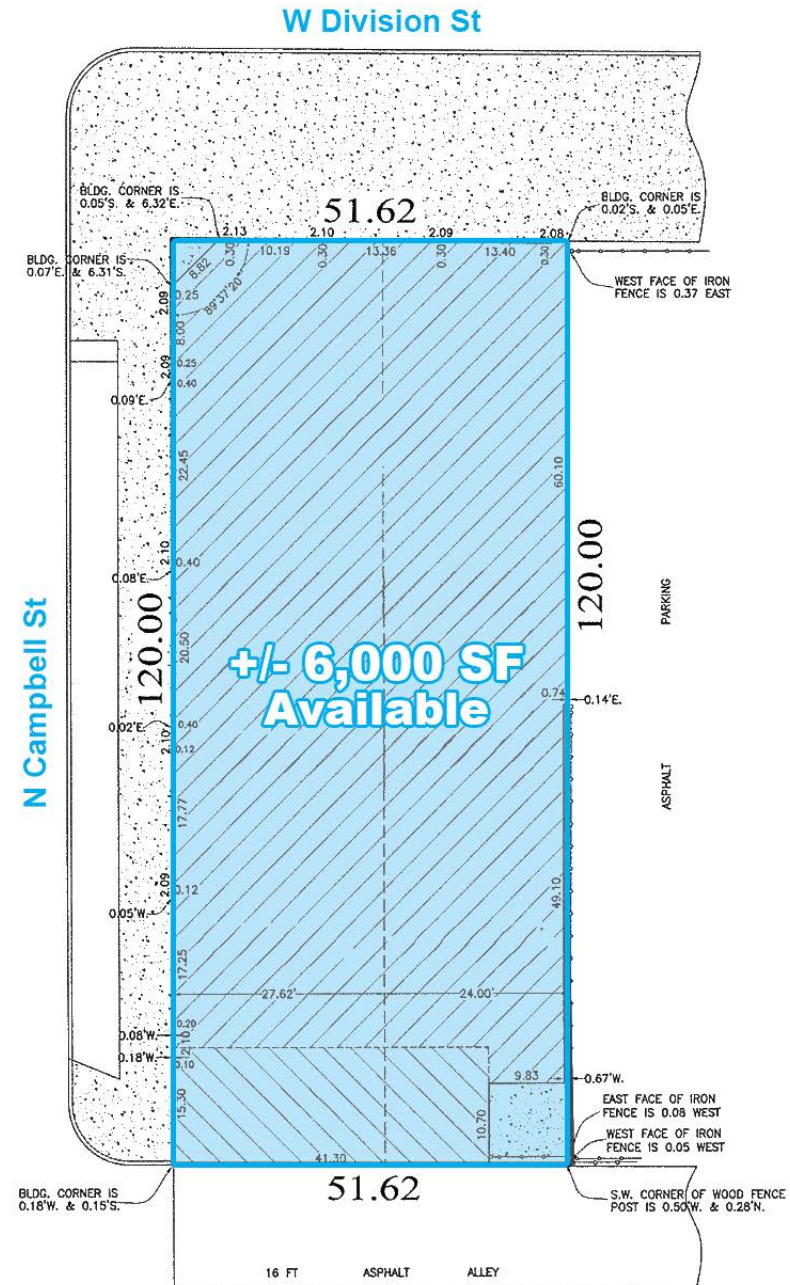
Total

## FRONTAGE



**50<sup>ft</sup>**

Along Division Street



CANVAS





# AERIAL

W. North Avenue - 22,800 VPD



W. Division Street - 13,100 VPD

**SITE**



CLEMENTE PARK

SAINT MARY OF NAZARETH HOSPITAL

W. Division Street - 15,400 VPD



FOR MORE INFORMATION, PLEASE CONTACT

ANTHONY CAMPAGNI  
ac@canvasrealestate.com  
847.651.8669

ELAN RASANSKY  
elan@canvasrealestate.com  
414.380.1555

MICHAEL WALLACE  
mwallace@canvasrealestate.com  
614.537.2403



CANVAS