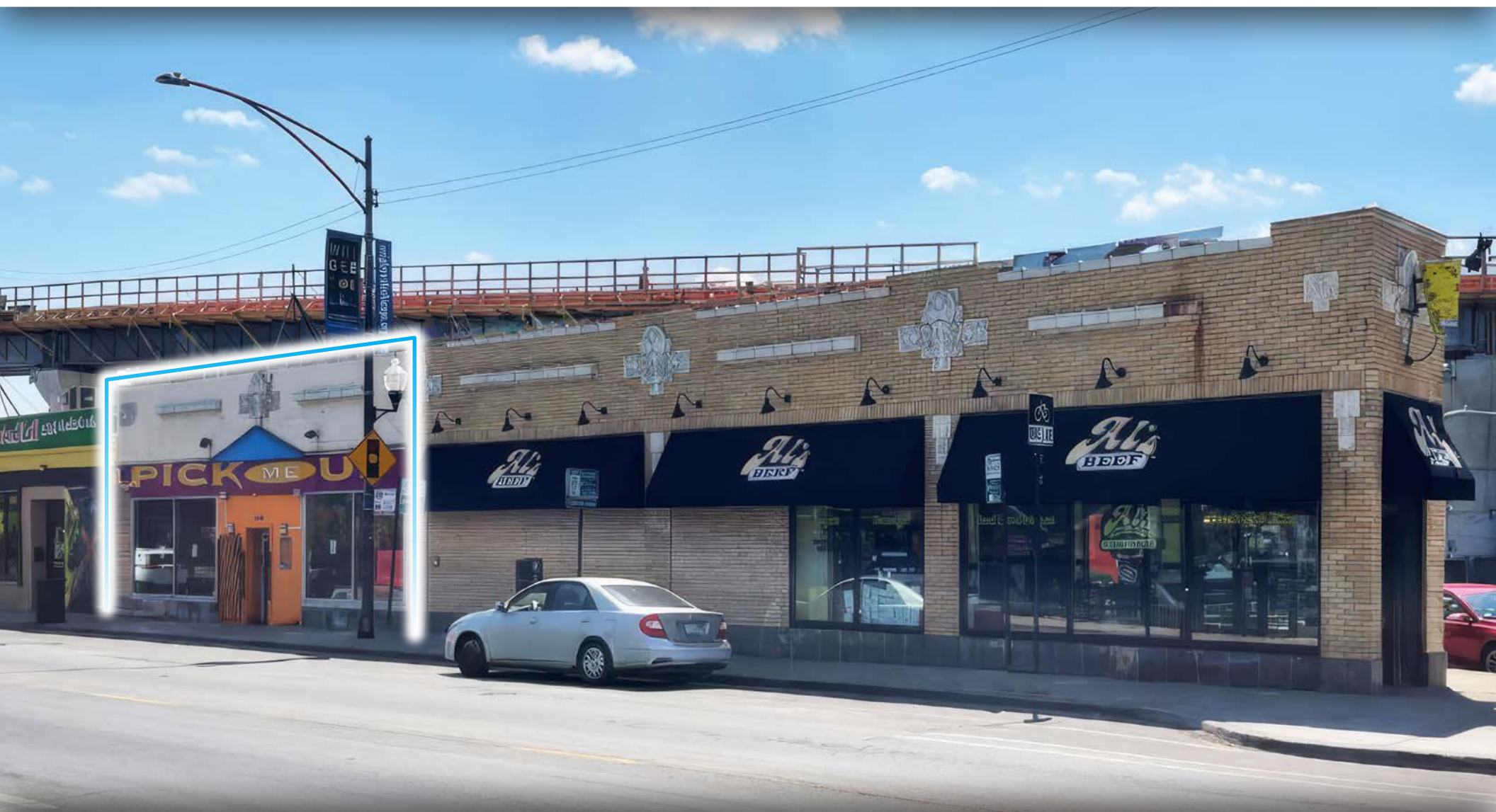


RETAIL/RESTAURANT SPACE
AVAILABLE FOR LEASE

3408 N. Clark St.
LAKEVIEW - CHICAGO



CANVAS

LAKEVIEW

Located at the Intersection of Clark,
Sheffield and Roscoe

HIGHLIGHTS

- High profile signalized corner at Clark, Sheffield, and Roscoe
- 1,870 SF available with frontage and access on both Sheffield and Clark
- Al's Beef recently extended, showing commitment and strong sales
- Within easy walking distance (.3 miles) of Wrigley Field, attracting 3 million visitors each year

NEIGHBORHOOD RETAILERS



DUNKIN'



SportClips
HAIRCUTS



TACO BELL

Walgreens

DEMOGRAPHICS



104k+

Total Population
1 Mile



\$157k+

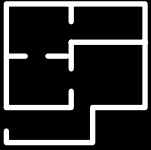
Average HH Income
1 Mile



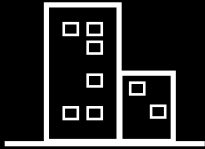
75.2k+

Daytime Population
1 Mile

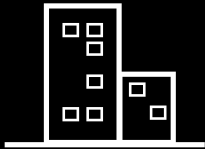
SPACE AVAILABLE



1,870 sf
Total

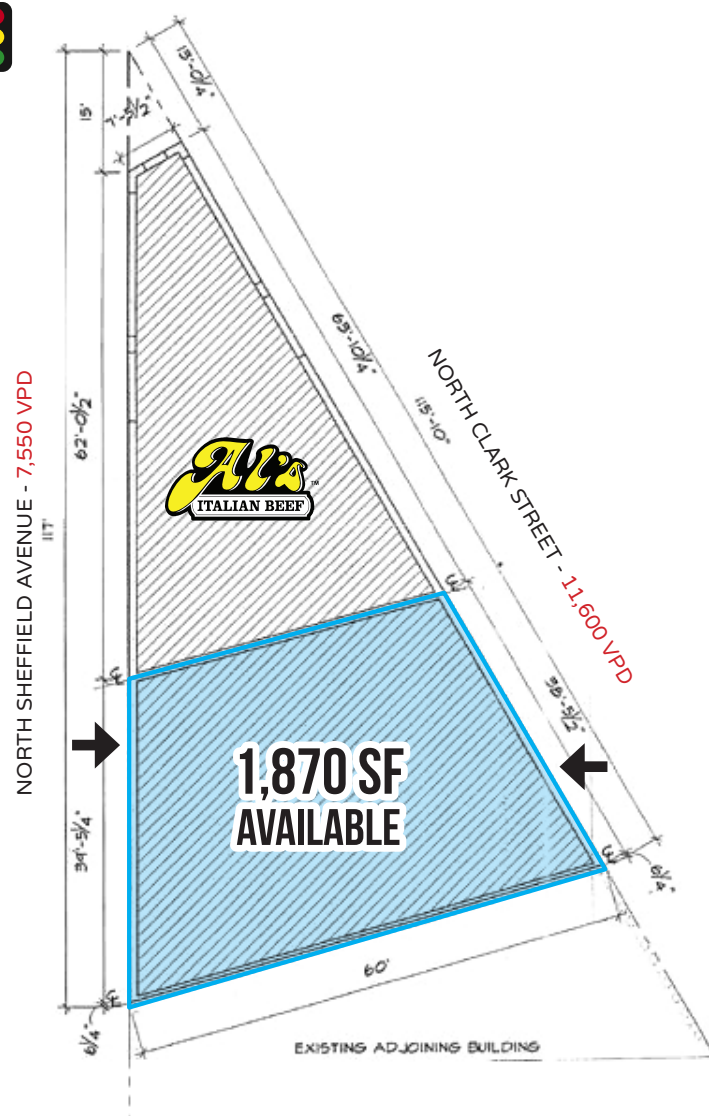


38'5 1/2"
Frontage on N. Clark



39'5 1/4"
Frontage on N. Sheffield

SITE PLAN

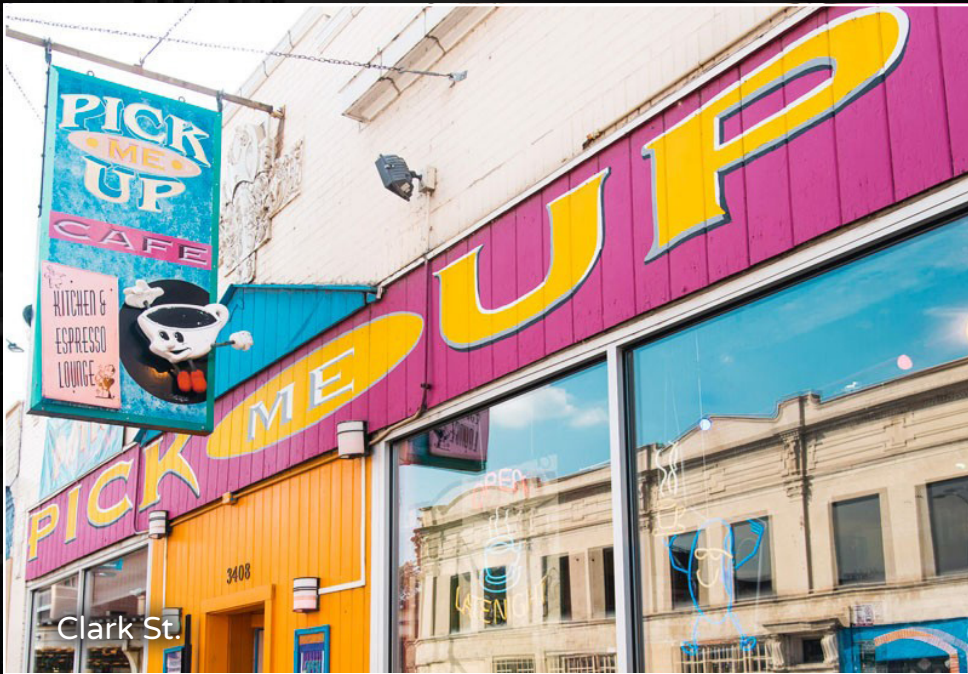




Clark St.



Sheffield Ave.



Clark St.



Sheffield Ave.





FOR MORE INFORMATION, PLEASE CONTACT

ANTHONY CAMPAGNI
 ac@canvasrealestate.com
 847.651.8669

ELAN RASANSKY
 elan@canvasrealestate.com
 414.380.1555

MICHAEL WALLACE
 mwallace@canvasrealestate.com
 614.537.2403

CANVAS

2211 North Elston Avenue,
 Suite 307, Chicago
 www.canvasrealestate.com