

RETAIL/RESTAURANT SPACE
AVAILABLE FOR LEASE

5622 N. Clark St.
ANDERSONVILLE - CHICAGO



CANVAS

ANDERSONVILLE

Located at the West block of Clark
between Olive and Bryn Mawr

HIGHLIGHTS

- 1,410 SF 2nd-gen cafe/deli space available in Andersonville.
- Excellent visibility with 27 feet of frontage along heavily trafficked N. Clark. (7,700 VPD on N. Clark, 14,400 VPD on N. Ashland)
- Steps from national and local retailers, restaurants, and boutique shops that draw consistent traffic.

NEIGHBORHOOD RETAILERS



DEMOGRAPHICS



422k+

Total Population
3 Miles



\$119k+

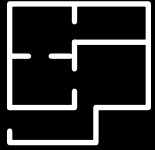
Average HH Income
3 Miles



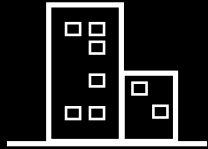
310k+

Daytime Population
3 Miles

SPACE AVAILABLE

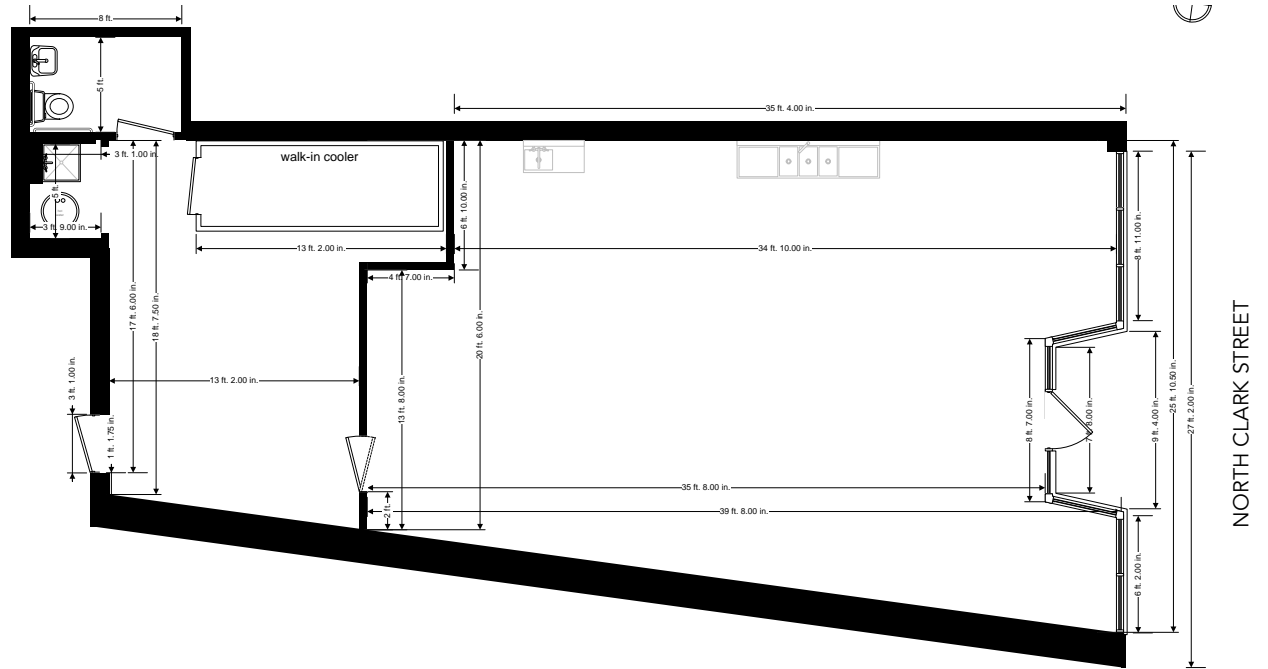


1,410 sf
Total



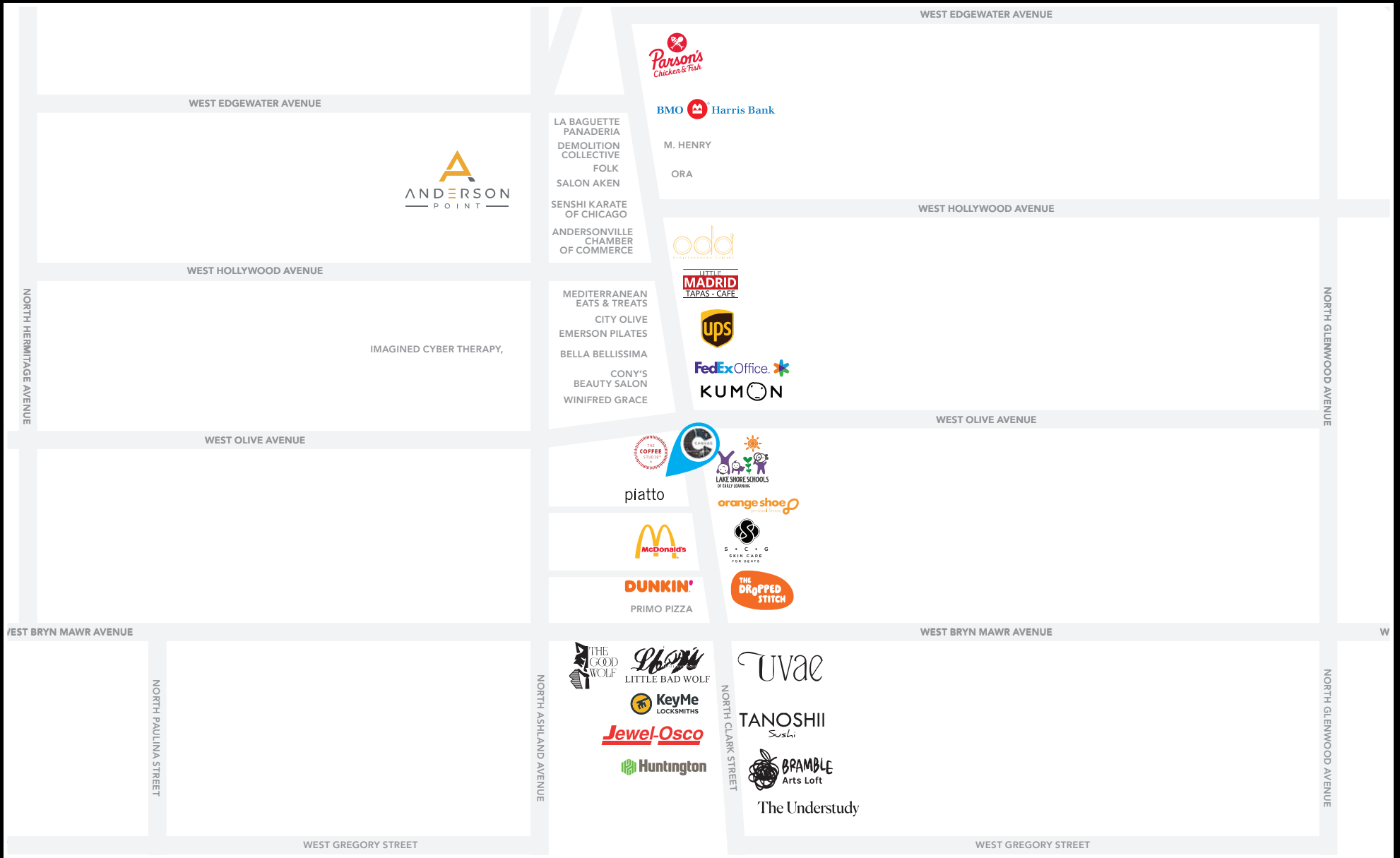
27'2"
Frontage on
N. Clark

FLOOR PLAN





CANVAS



FOR MORE INFORMATION, PLEASE CONTACT

CANVAS

ANTHONY CAMPAGNI
 ac@canvasrealestate.com
 847.651.8669

ELAN RASANSKY
 elan@canvasrealestate.com
 414.380.1555

MICHAEL WALLACE
 mwallace@canvasrealestate.com
 614.537.2403

2211 North Elston Avenue,
 Suite 307, Chicago
 www.canvasrealestate.com