

RESTAURANT SPACE
AVAILABLE FOR LEASE

3343 N. Clark St.
LAKEVIEW - CHICAGO



CANVAS

LAKEVIEW

Located at the Northeast block of Clark
between Buckingham and Roscoe

HIGHLIGHTS

- Rarely available 5,632 SF (2 floors) 2nd-gen restaurant
- Surrounded by national and local restaurants, bars, and retailers; strong day and nighttime population
- Within easy walking distance (.3 miles) of Wrigley Field, attracting 3 million visitors each year

NEIGHBORHOOD RETAILERS



DEMOGRAPHICS



105k+

Total Population
1 Mile



\$162k+

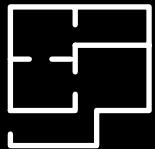
Average HH Income
1 Mile



80.1k+

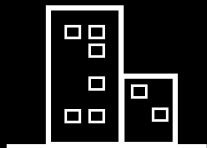
Daytime Population
1 Mile

SPACE AVAILABLE



2,816 sf

First Floor



50 ft

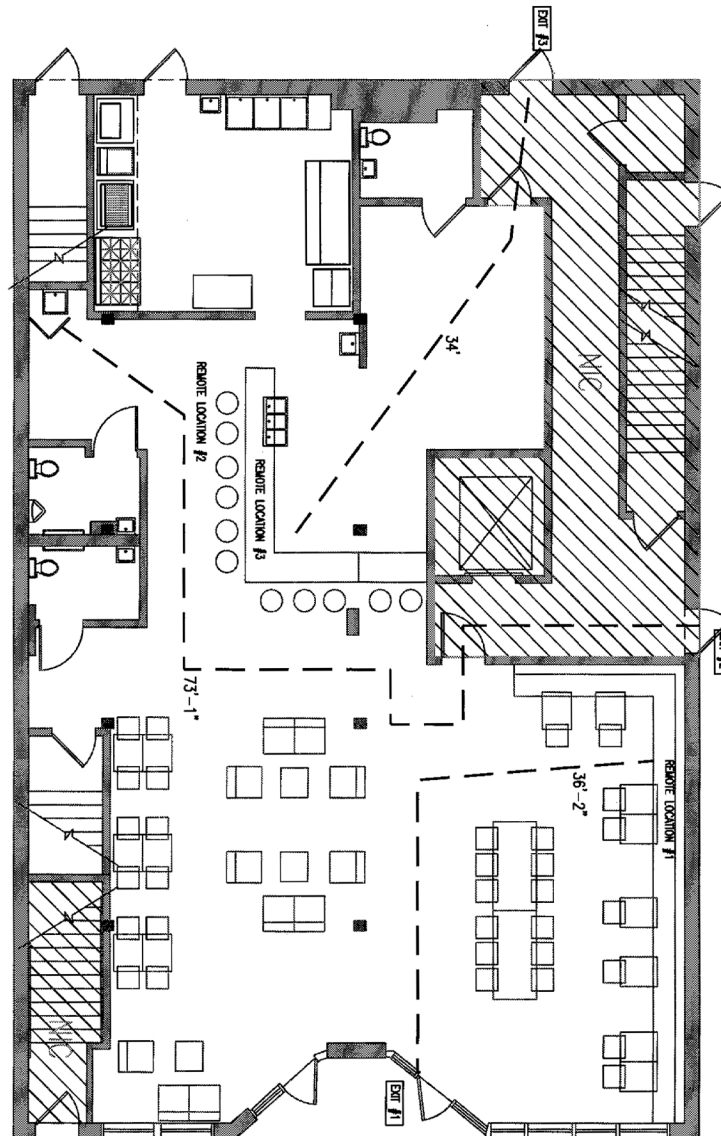
Frontage on N. Clark Street



11,600

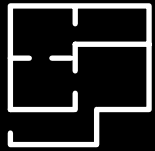
VPD on N. Clark Street

FIRST FLOOR PLAN



NORTH CLARK STREET

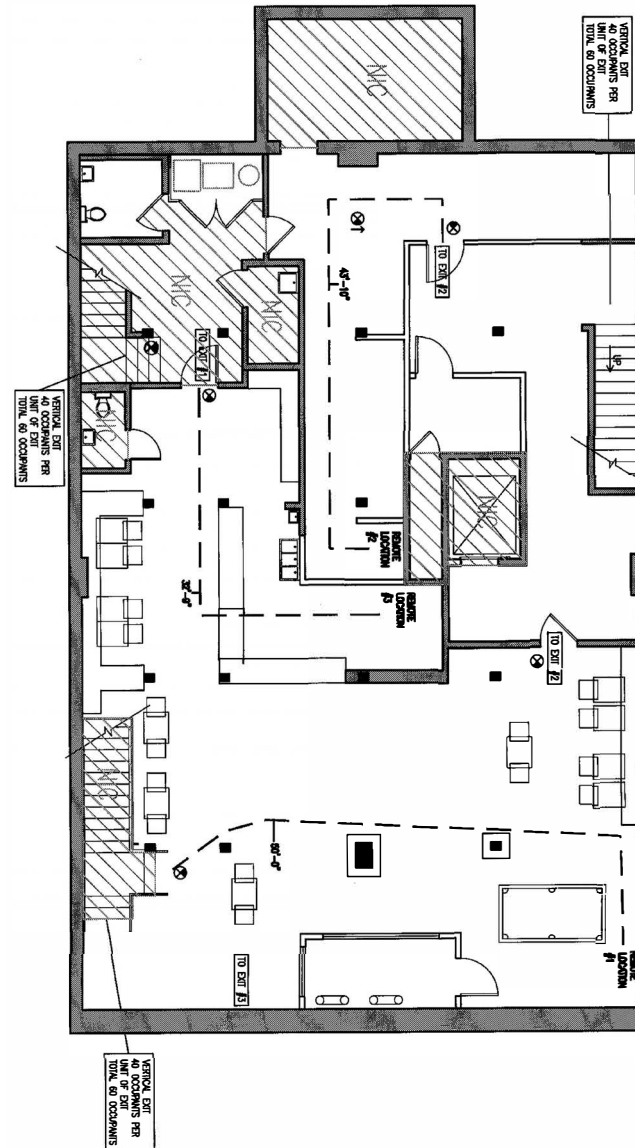
SPACE AVAILABLE

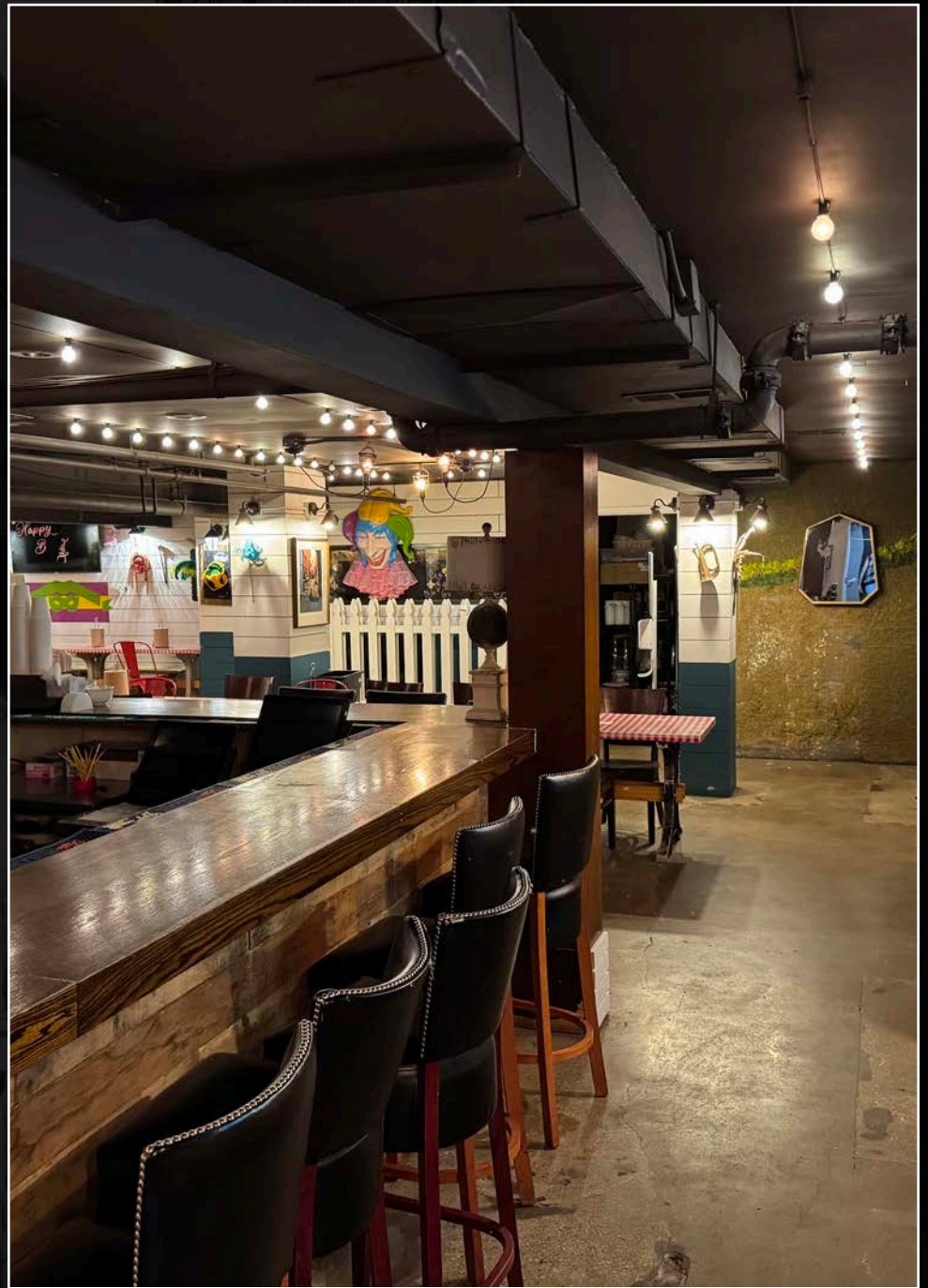
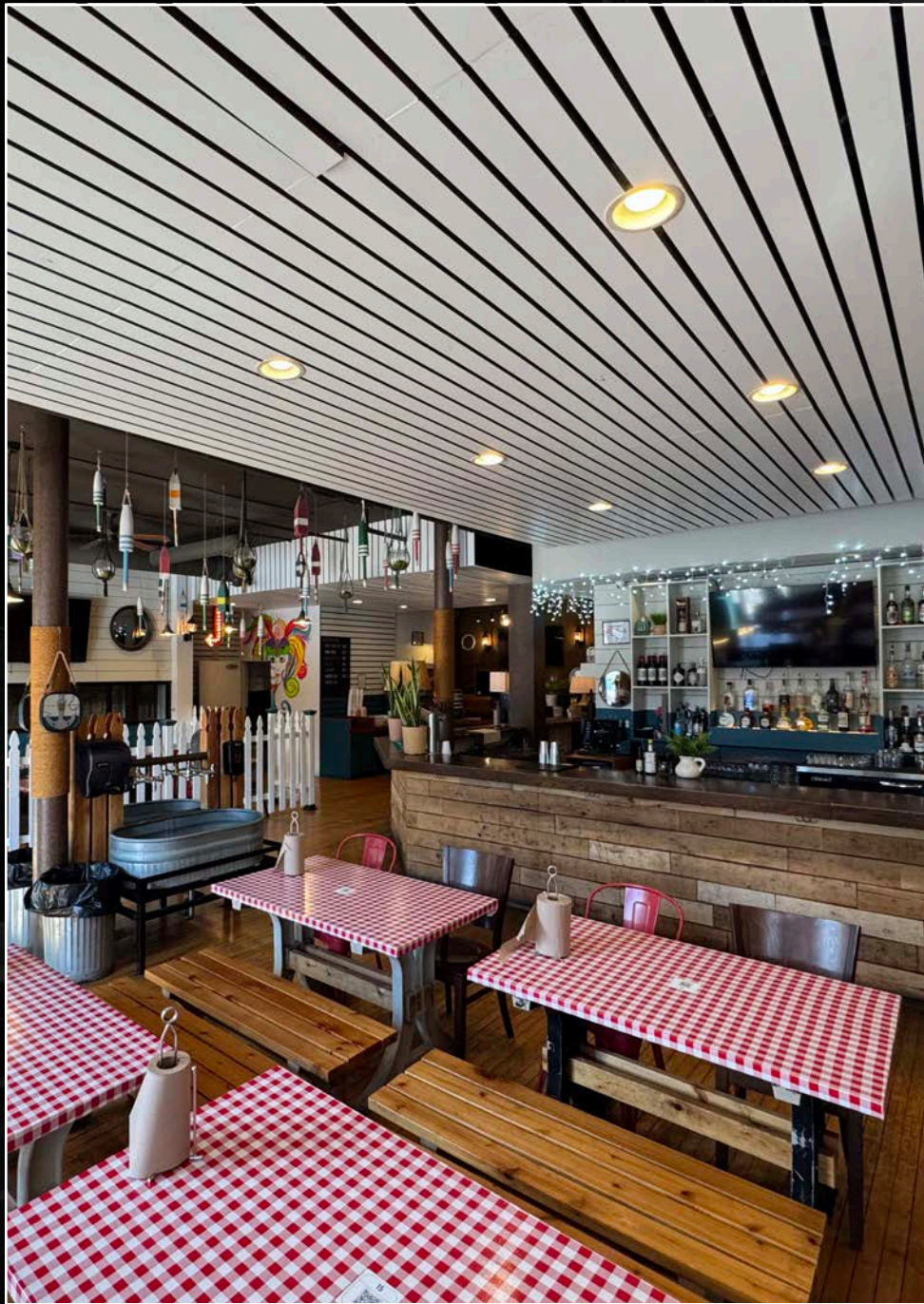


2,816 sf

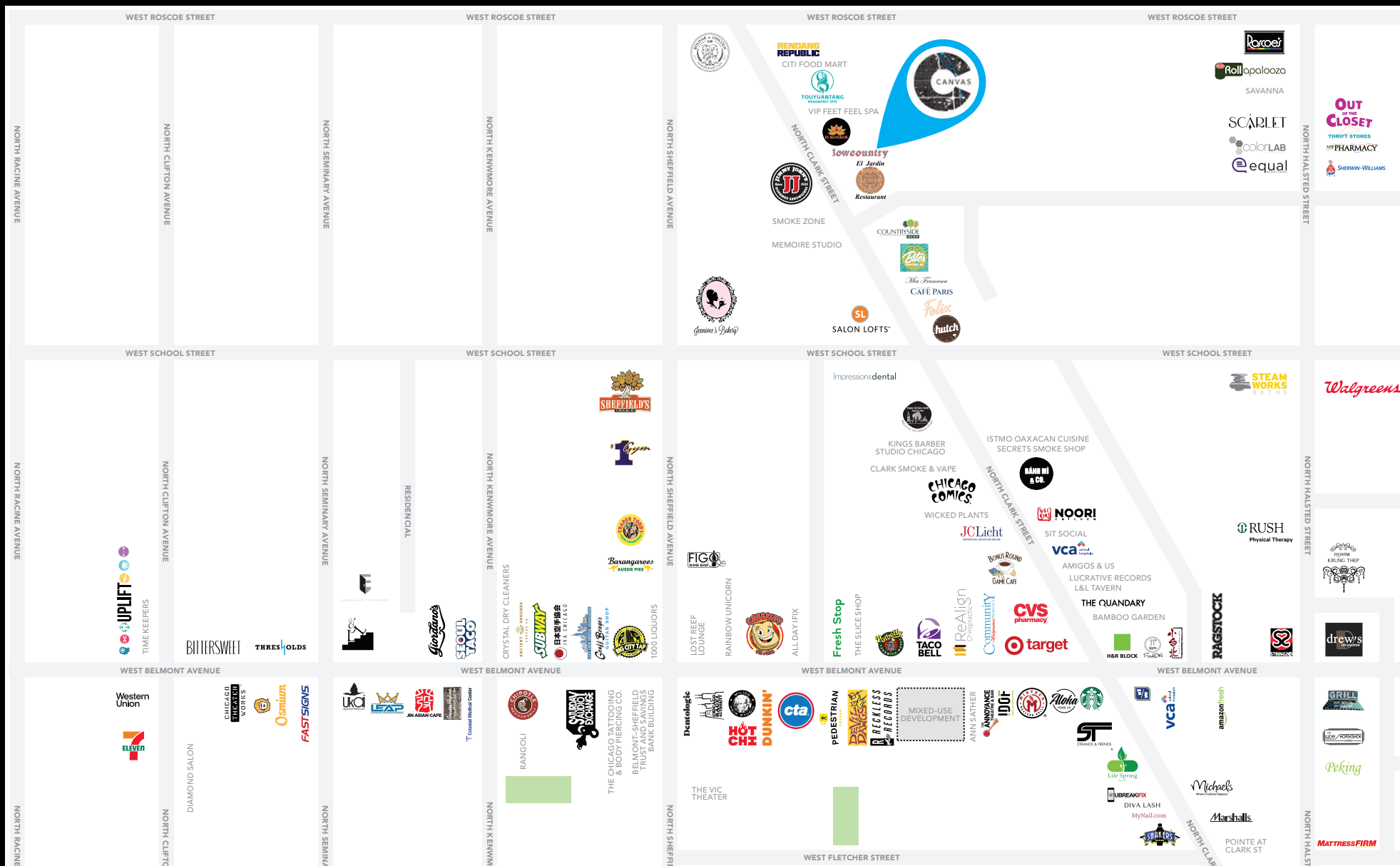
Lower Level

LOWER LEVEL PLAN





CANVAS



FOR MORE INFORMATION, PLEASE CONTACT

CANVAS

ANTHONY CAMPAGNI
ac@canvasrealestate.com
847.651.8669

ELAN RASANSKY
elan@canvasrealestate.com
414.380.1555

MICHAEL WALLACE
mwallace@canvasrealestate.com
614.537.2403

2211 North Elston Avenue,
Suite 307, Chicago
www.canvasrealestate.com