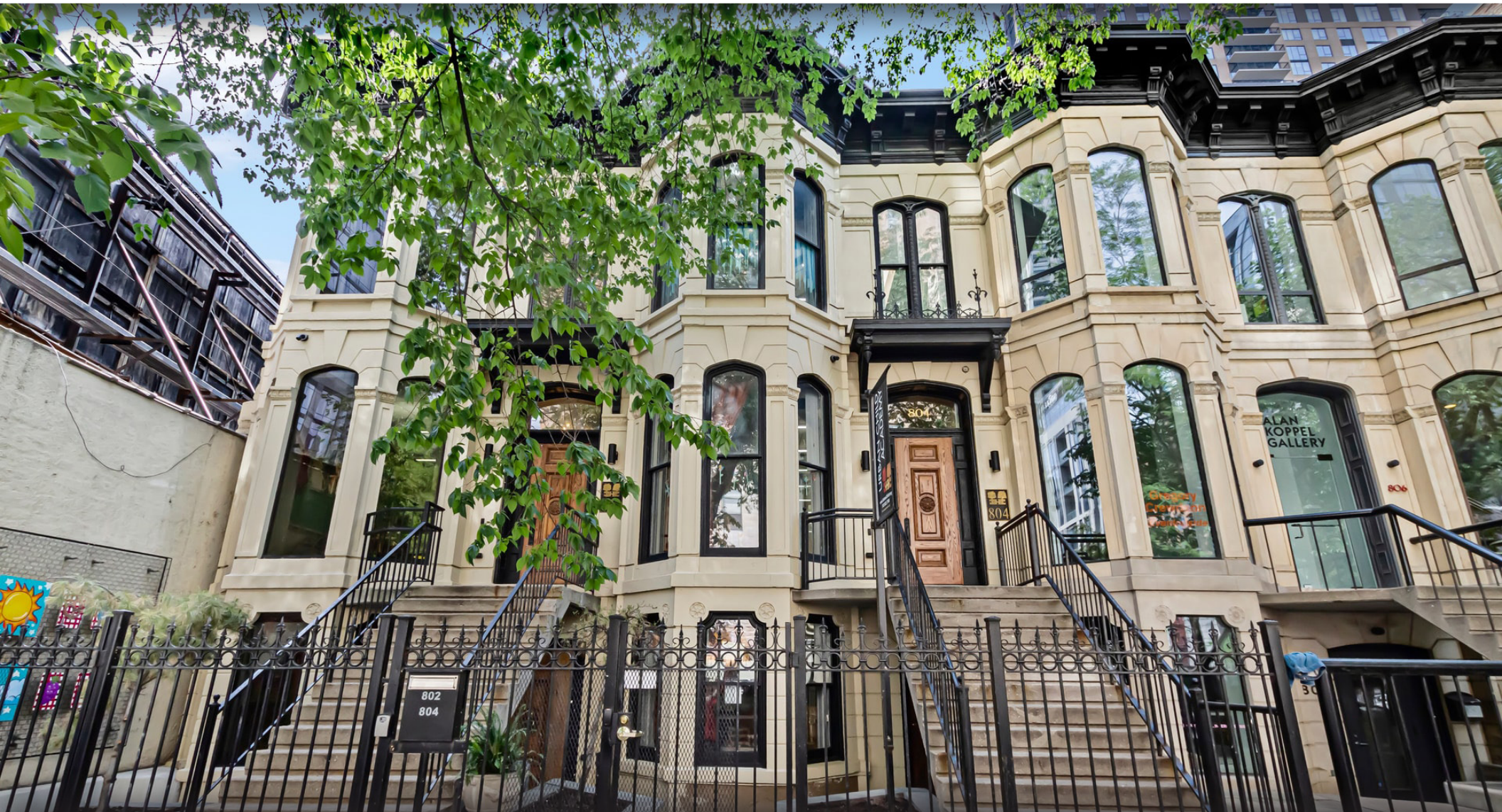


RETAIL SPACE
AVAILABLE FOR LEASE

802-804 N. Dearborn St. GOLD COAST - CHICAGO



CANVAS

GOLD COAST

Located at the Northwest block of Chestnut and Chicago

HIGHLIGHTS

- High visibility location at the intersection of the Gold Coast and River North.
- Steps from Washington Square Park, Chicago Avenue CTA, premier Gold Coast dining and retail, and in close proximity to Michigan Avenue.
- Beautifully restored historic brownstone with modern design.
- Surrounded by affluent residential density and creative boutique retail.

NEIGHBORHOOD RETAILERS



philz Coffee



LIFETIME®

ALPANA

Sophia STEAK

CHICAGO WINERY

Kilwins®

THE ALSTON

DEMOGRAPHICS



121k+

Total Population
1 Mile



\$191k+

Average HH Income
1 Mile



349k+

Daytime Population
1 Mile

SPACE AVAILABLE



2,000 sf

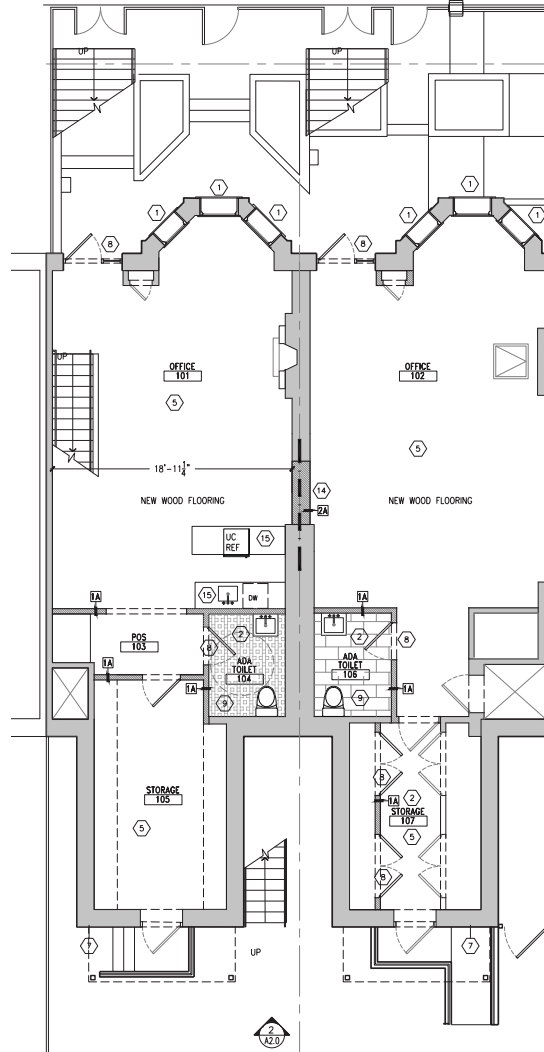
Ground Floor



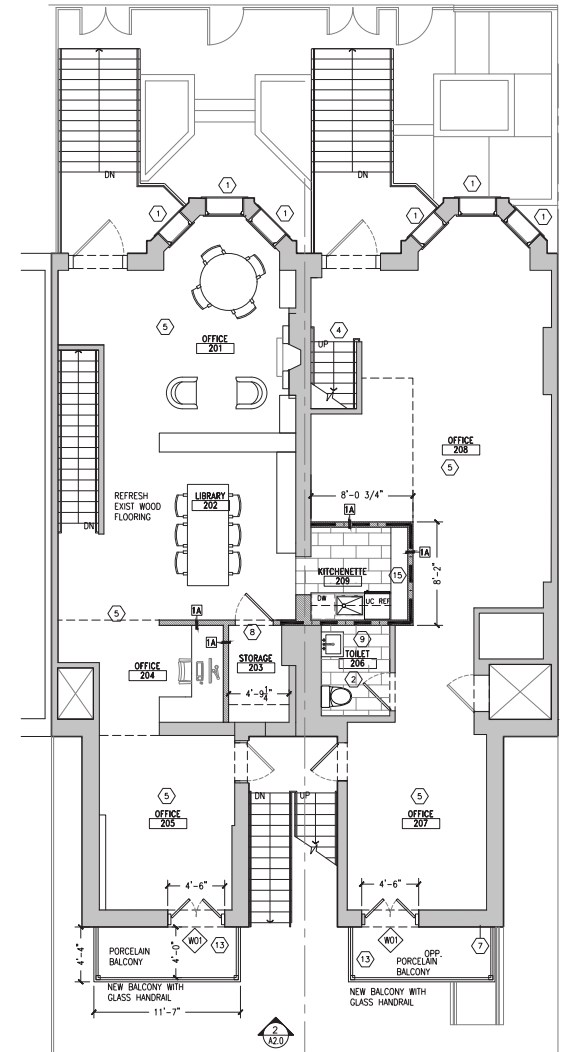
2,000 sf

Second Floor

FLOOR PLAN

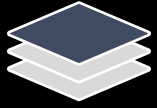


Ground Floor



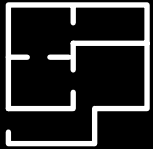
Second Floor

SPACE AVAILABLE



2,000 sf

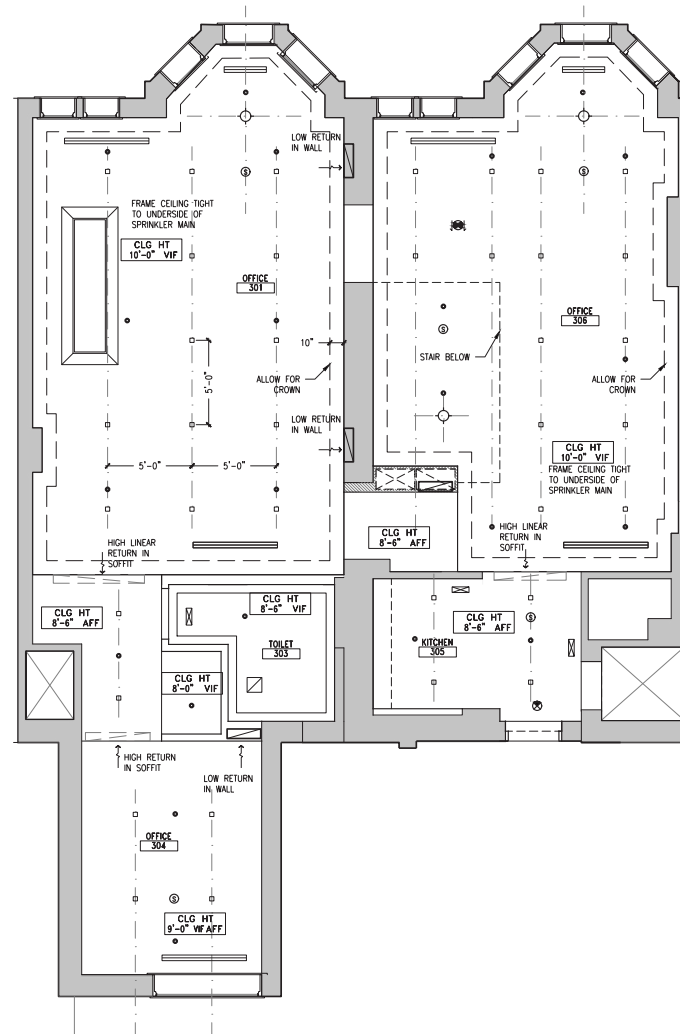
Third Floor



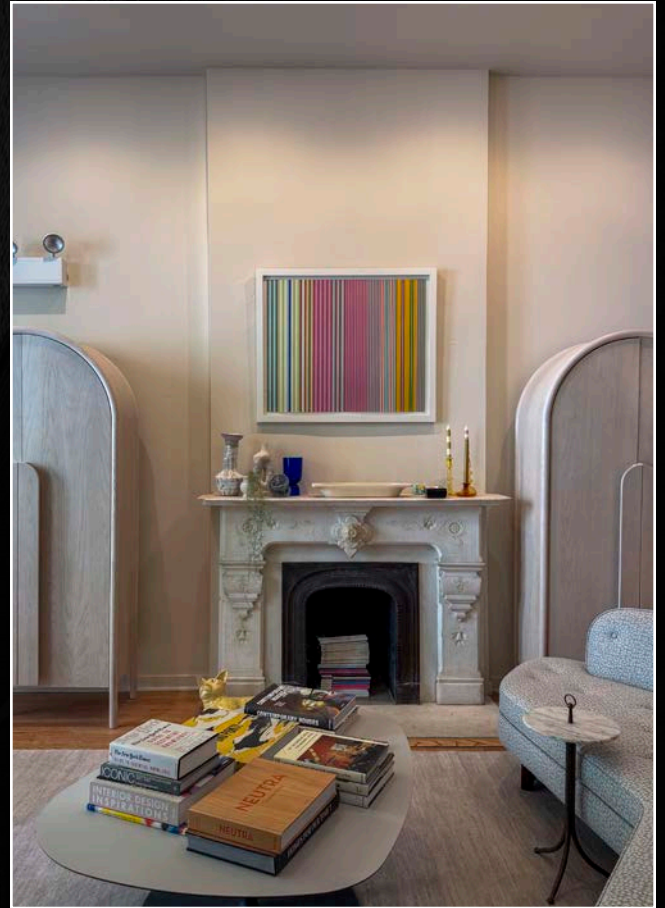
6,000 sf

Total

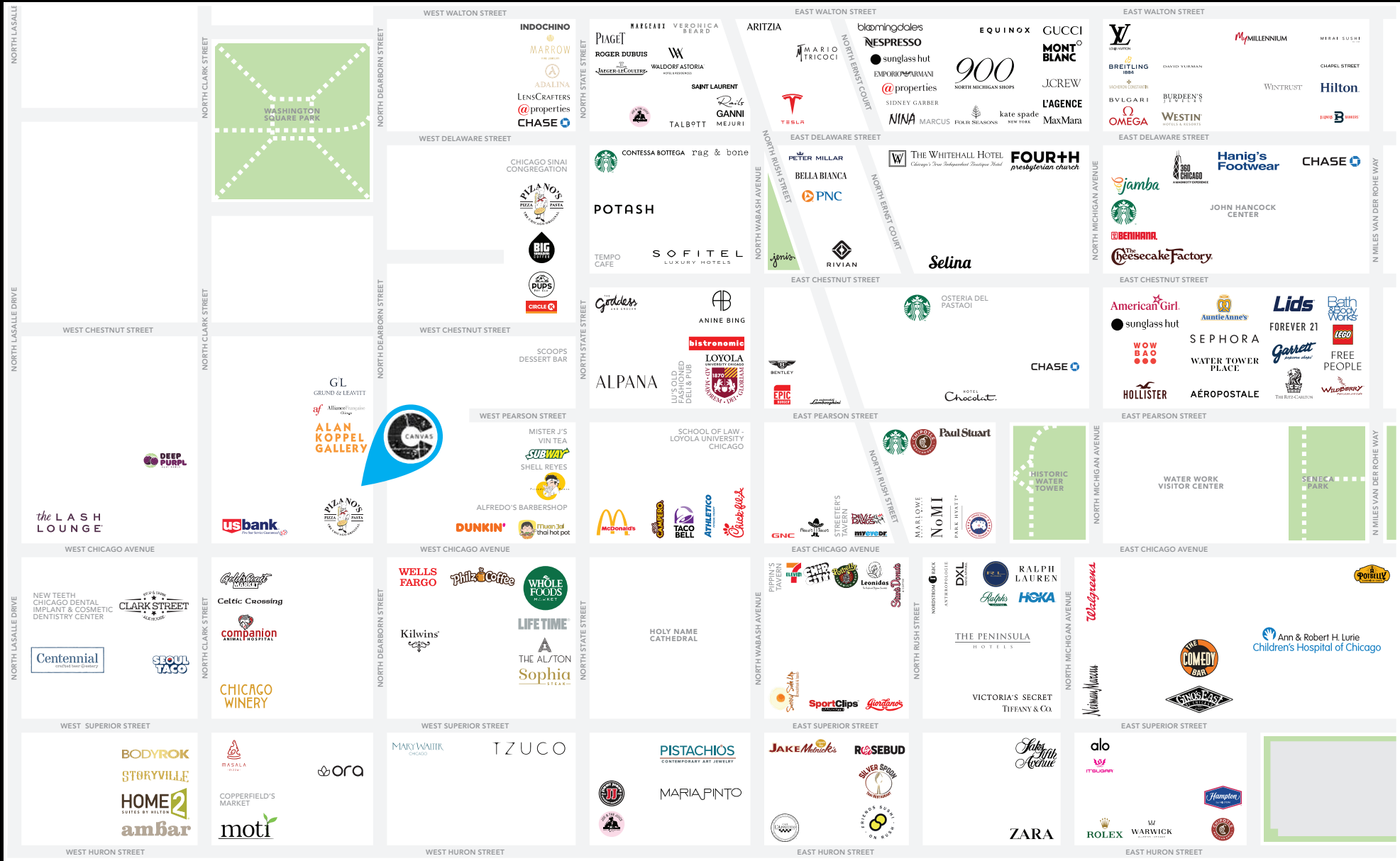
SITE PLAN



Third Floor



CANVAS



FOR MORE INFORMATION, PLEASE CONTACT

ELAN RASANSKY
 elan@canvasrealestate.com
 414.380.1555

MICHAEL WALLACE
 mwallace@canvasrealestate.com
 614.537.2403

RACHEL NASATIR
 rnasatir@canvasrealestate.com
 312.361.4282

CANVAS

2211 North Elston Avenue,
 Suite 307, Chicago
 www.canvasrealestate.com