

RETAIL/RESTAURANT SPACE
AVAILABLE FOR LEASE

1121 W. 18th St.
PILSEN - CHICAGO



CANVAS

PILSEN

Located on the South block of 18th
between May and Carpenter

HIGHLIGHTS

- Rarely available, brand-new construction (2025)
- 5,000 SF freestanding building in the heart of Pilsen
- Prominent 50 feet of frontage along bustling West 18th Street (9,600 vehicles per day)
- Situated on 18th Street—recognized by TimeOut as one of the coolest streets in the world
- Ideal for a variety of uses--retail, restaurant, medical, etc.

NEIGHBORHOOD RETAILERS



**BENNY'S
PIZZA**



**THE
ALDERMAN**



SUBWAY

WINTRUST

DEMOGRAPHICS



382k+

Total Population
3 Miles



\$143k+

Average HH Income
3 Miles



871k+

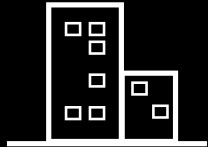
Daytime Population
3 Miles

SPACE AVAILABLE



5,000 sf

Total



50 ft

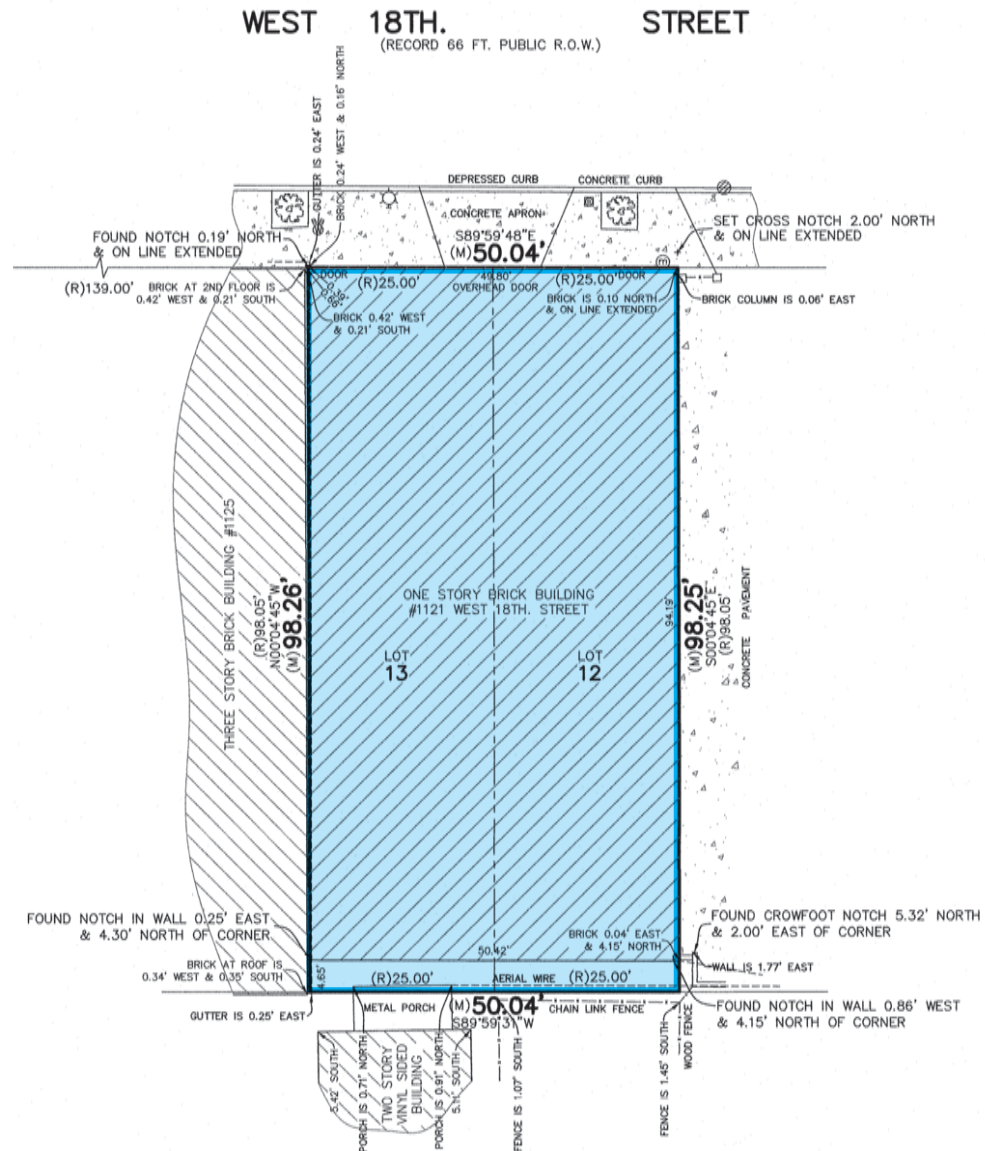
Frontage

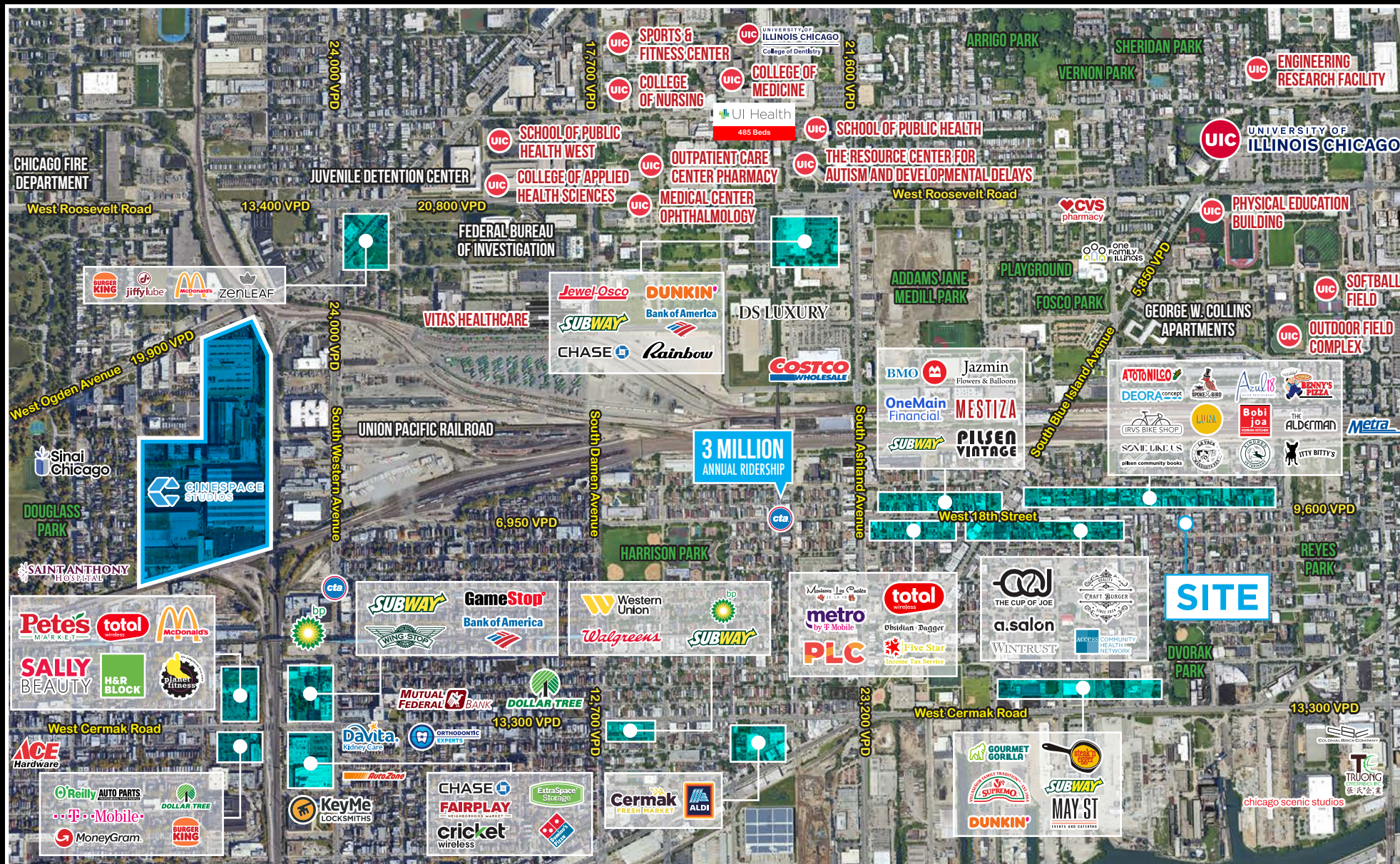


9,600

VPD on W. 18th Street

SITE PLAN





FOR MORE INFORMATION, PLEASE CONTACT

ANTHONY CAMPAGNI
ac@canvasrealestate.com
847.651.8669

ELAN RASANSKY
elan@canvasrealestate.com
414.380.1555

MICHAEL WALLACE
mwallace@canvasrealestate.com
614.537.2403

CANVAS

2211 North Elston Avenue,
Suite 307, Chicago
www.canvasrealestate.com