

RETAIL SPACE
AVAILABLE FOR LEASE

1509-1513 W. Fullerton Ave.

LINCOLN PARK - CHICAGO



CANVAS

LINCOLN PARK

Located at South block of Fullerton
between Bosworth and Greenview

HIGHLIGHTS

- High visibility space fronting Fullerton Avenue in the heart of Lincoln Park with strong foot traffic.
- Fully built out retail space with exposed brick, natural lighting, 10' ceilings, and hardwood flooring.
- Open, flexible layout suitable for a variety of retail and service uses.

NEIGHBORHOOD RETAILERS



Ann & Robert H. Lurie
Children's Hospital of Chicago



Marshalls



OfficeMax[®]
LANE BRYANT

Party City



Walgreens

Wendy's

DEMOGRAPHICS



57.8k+

Total Population
1 Mile



\$239k+

Average HH Income
1 Mile



54.0k+

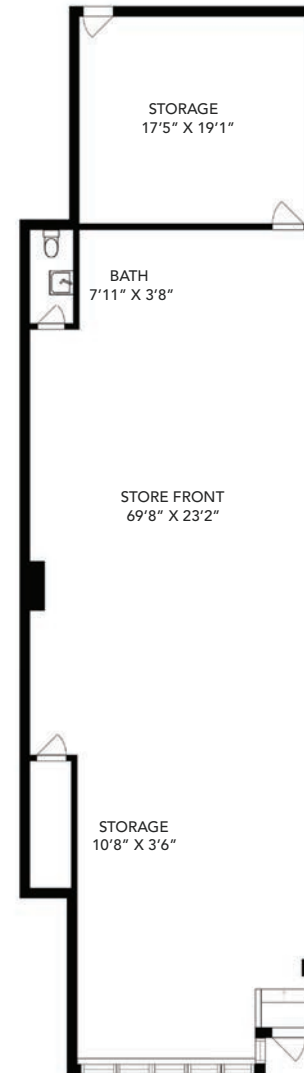
Daytime Population
1 Mile

SPACE AVAILABLE



2,092 sf
Total

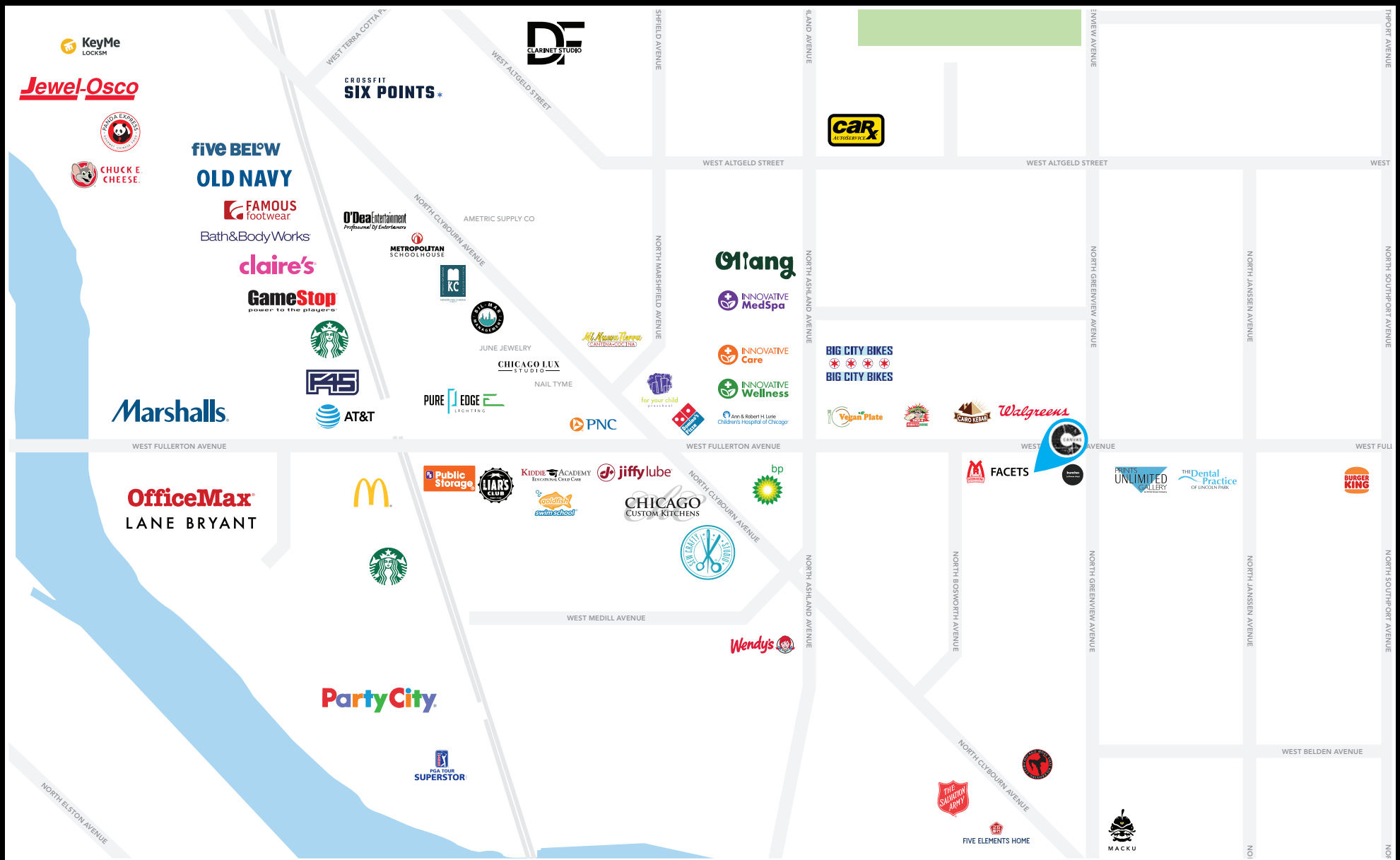
FLOOR PLAN



WEST FULLERTON AVENUE



CANVAS



FOR MORE INFORMATION, PLEASE CONTACT

ANDREW BECKER

abecker@canvasrealestate.com
312.231.2600

MICHAEL WEXLER

mwexler@canvasrealestate.com
773.426.1759

RACHEL NASATIR

rnasatir@canvasrealestate.com
312.361.4282

CANVAS

2211 North Elston Avenue,
Suite 307, Chicago
www.canvasrealestate.com