

RETAIL SPACE
AVAILABLE FOR LEASE

1912-1914 N. Milwaukee Ave. BUCKTOWN - CHICAGO



CANVAS

BUCKTOWN

Located at West block of Wabash
between Harrison and Balbo

PREMISES

- Spaces Available
 - » 1,931 sf (1912 N. Milwaukee)
 - » 3,564 sf (1914 N. Milwaukee)
 - » 2,591 sf (1920 N. Milwaukee - LEASED)

HIGHLIGHTS

- Near Blue Line CTA Western station (2M+ annual ridership) drives high morning/evening commuter traffic to site
- Steps away from The 606: Chicago's premier urban trail serving Logan Square, Wicker Park, and Bucktown
- Highly visible corner and off-corner position alongside high traffic intersection of Western and Milwaukee (31,800 vpd)

NEIGHBORING TENANTS



DEMOGRAPHICS



61.5k+

Total Population
1 Mile



\$183k+

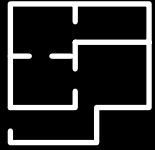
Average HH Income
1 Mile



52.1k+

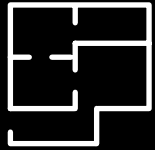
Daytime Population
1 Mile

SPACE AVAILABLE



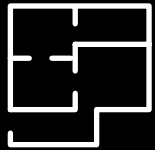
1,931 sf

1912 N. Milwaukee



3,564 sf

1914 N. Milwaukee



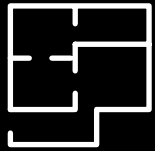
2,591 sf

1920 N. Milwaukee (LEASED)

SITE PLAN

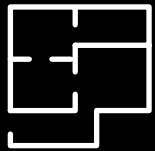


SPACE AVAILABLE



1,931 sf

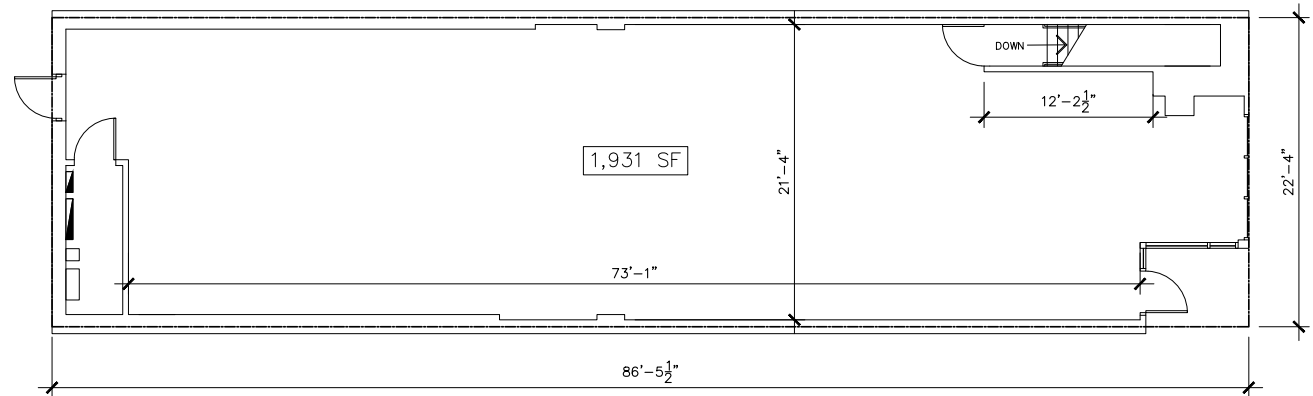
Ground Floor



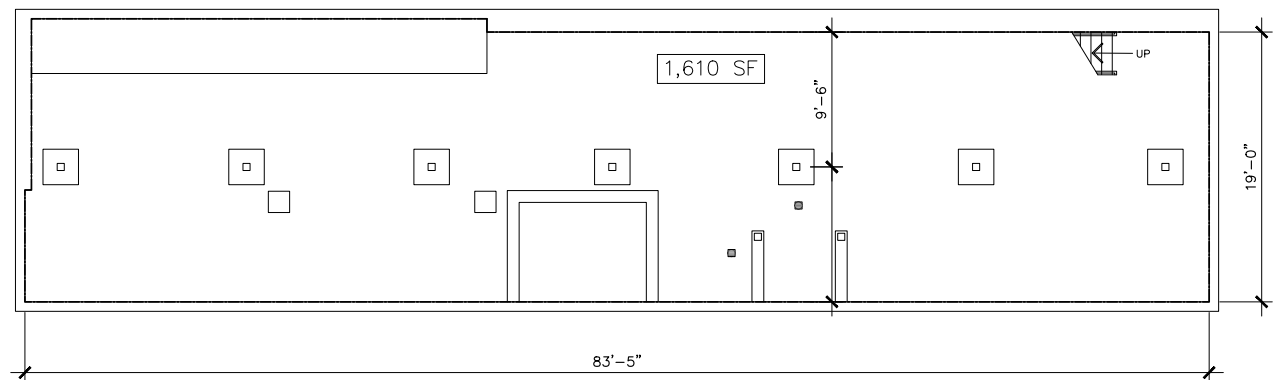
1,610 sf

Lower Level

1912 N. MILWAUKEE FLOOR PLAN

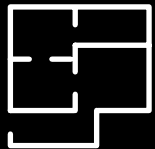


GROUND FLOOR



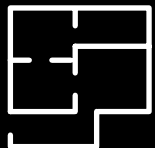
LOWER LEVEL

SPACE AVAILABLE



3,564 sf

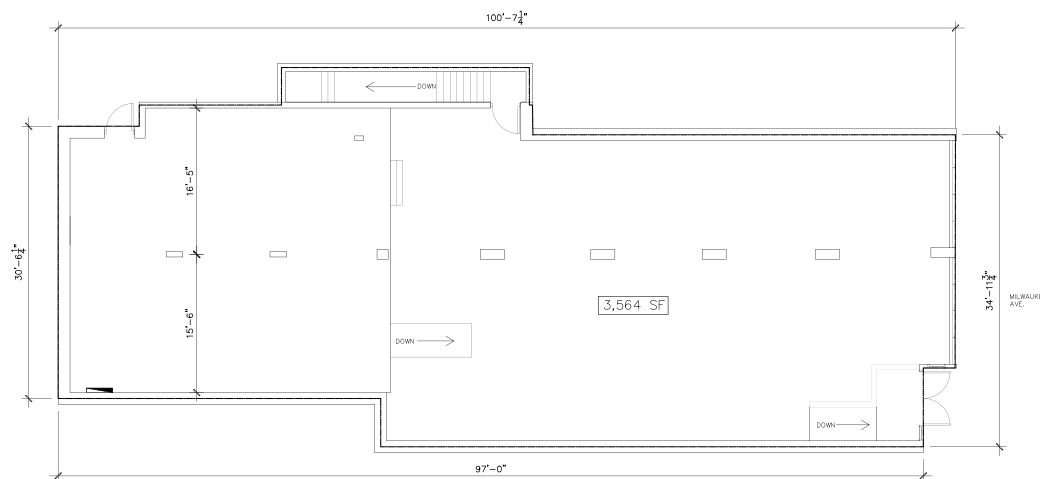
Ground Floor



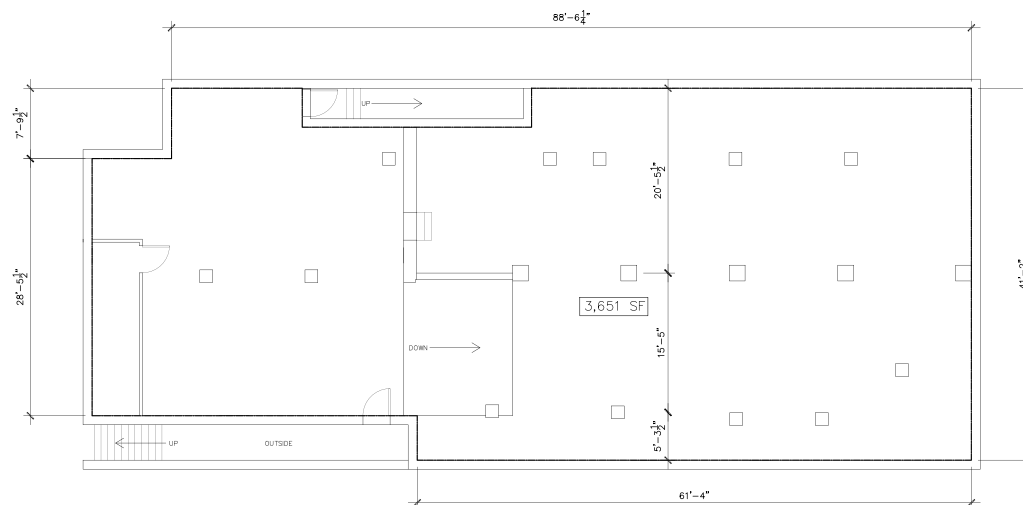
3,651 sf

Lower Level

1914 N. MILWAUKEE FLOOR PLAN



GROUND FLOOR



LOWER LEVEL





FOR MORE INFORMATION, PLEASE CONTACT

ANDREW BECKER
 abecker@canvasrealestate.com
 312.231.2600

MICHAEL WEXLER
 mwexler@canvasrealestate.com
 773.426.1759

JOHN BASSI
 jbassi@canvasrealestate.com
 708.822.4583

CANVAS

2211 North Elston Avenue,
 Suite 307, Chicago
 www.canvasrealestate.com