

SECOND GENERATION RESTAURANT
SPACE AVAILABLE FOR LEASE

2100 N. Clark St.
LINCOLN PARK - CHICAGO



CANVAS

LINCOLN PARK

Located at the Northwest corner
of Clark and Dickens

HIGHLIGHTS

- Prime east Lincoln Park location along the highly visible Clark Street, surrounded by dense residential, strong retail co-tenancy, and consistent pedestrian traffic.
- Second generation restaurant space with existing kitchen infrastructure.
- Corner storefront space with excellent natural light and strong signage opportunities.

NEIGHBORHOOD RETAILERS

CHICAGO PIZZA
And Oven Grinder Co.

DENUCCIS



Gemini
LINCOLN PARK

Lincoln Park
Waxing Studio



miso & nori
JAPANESE CUISINE



RANALLI'S

Riccardo
TRATTORIA

Riccardo
ENOTECA



DEMOGRAPHICS



67.0k+

Total Population
1 Mile



\$194k+

Average HH Income
1 Mile



55.1k+

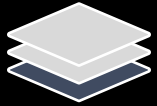
Daytime Population
1 Mile

SPACE AVAILABLE



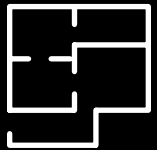
925 sf

Ground Floor



1,180 sf

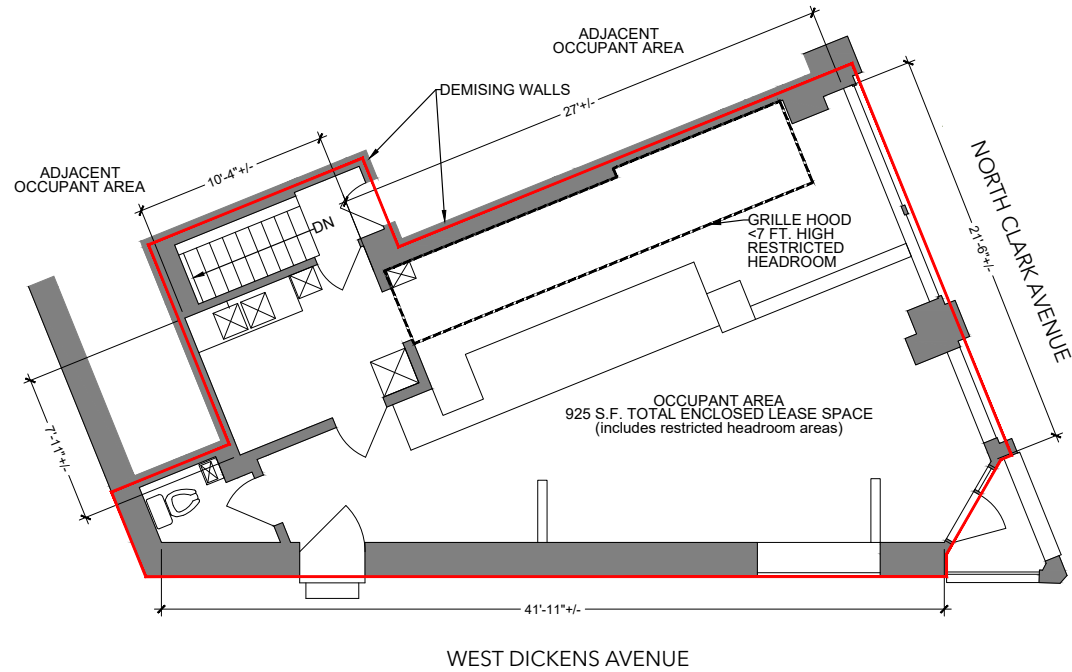
Lower Level



2,105 sf

Total

GROUND FLOOR PLAN

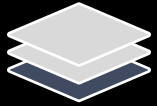


SPACE AVAILABLE



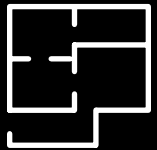
925 sf

Ground Floor



1,180 sf

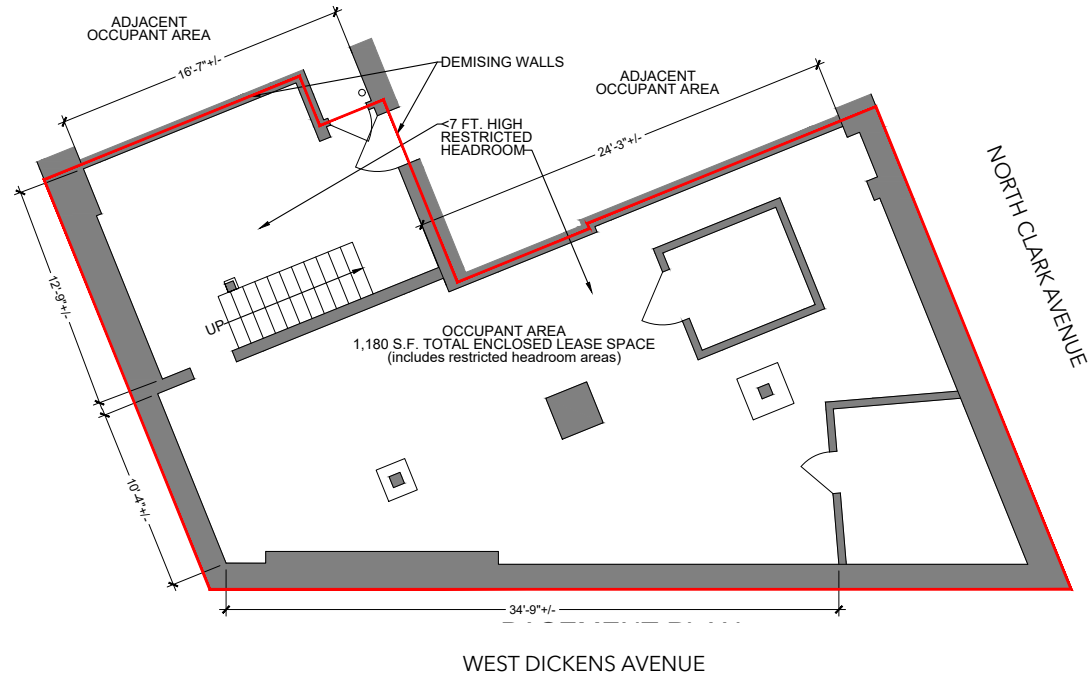
Lower Level

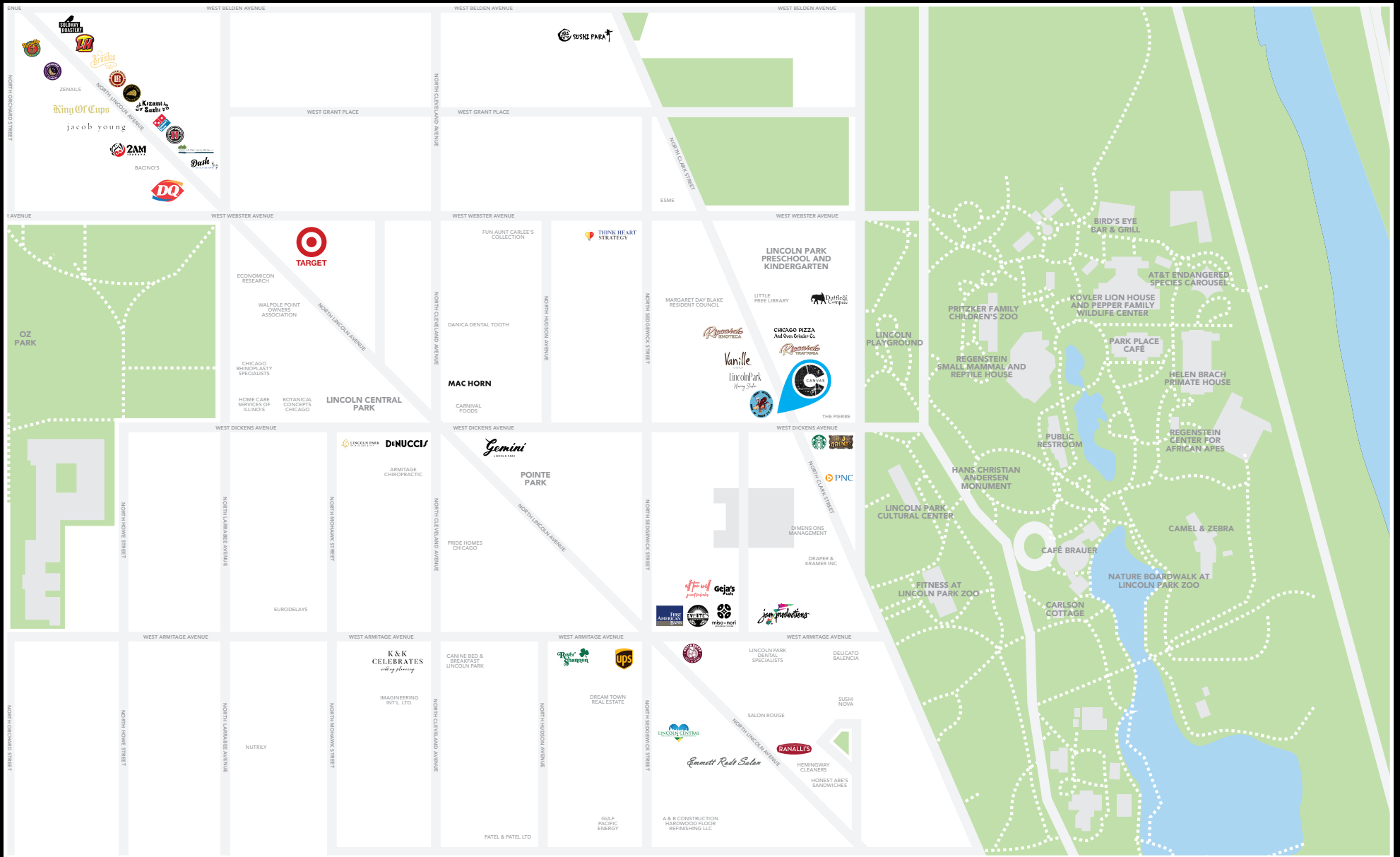


2,105 sf

Total

LOWER LEVEL PLAN





FOR MORE INFORMATION, PLEASE CONTACT

ANDREW BECKER

abecker@canvasrealestate.com
312.231.2600

MICHAEL WEXLER

mwxler@canvasrealestate.com
773.426.1759

RACHEL NASATIR

rnatir@canvasrealestate.com
312.361.4282

CANVAS

2211 North Elston Avenue,
Suite 307, Chicago
www.canvasrealestate.com