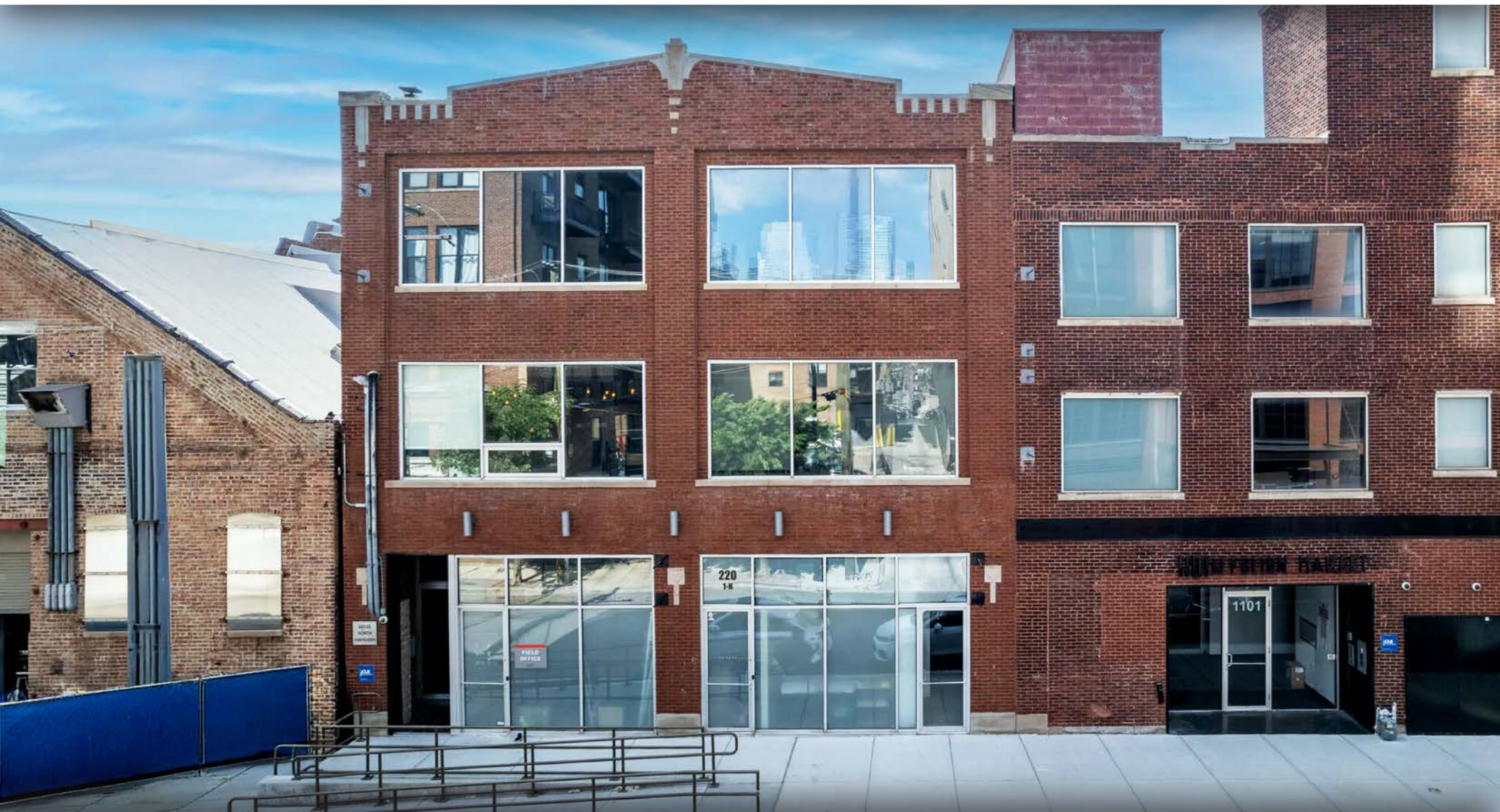


SINGLE TENANT BUILDING  
AVAILABLE FOR LEASE

# 220 N. Aberdeen St. FULTON MARKET - CHICAGO



# FULTON MARKET

Located at the West block of Aberdeen  
between Fulton and Lake

## HIGHLIGHTS

- Single Tenant Building Opportunity in the heart of Fulton Market
- 13,671 SF total available among 3 floors + basement
- Immediately adjacent to Design Within Reach, Herman Miller, Knoll, OFS, UPLIFT Desk, Il Carciofo, and more.

## NEIGHBORING TENANTS



# DEMOGRAPHICS



**66.7k+**  
Total Population  
1 Mile



**\$190k+**  
Average HH Income  
1 Mile



**177k+**  
Daytime Population  
1 Mile

# SPACE AVAILABLE



**3,322 sf**

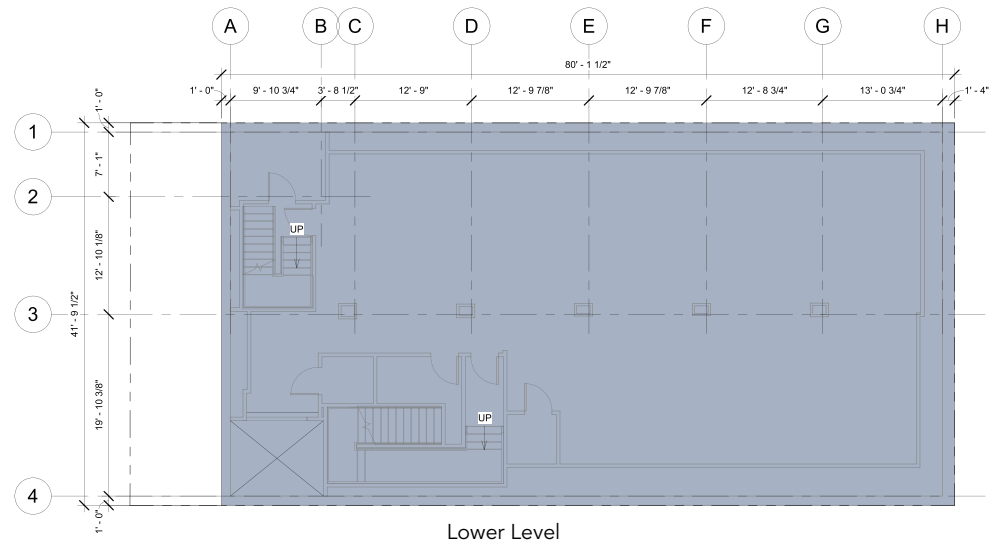
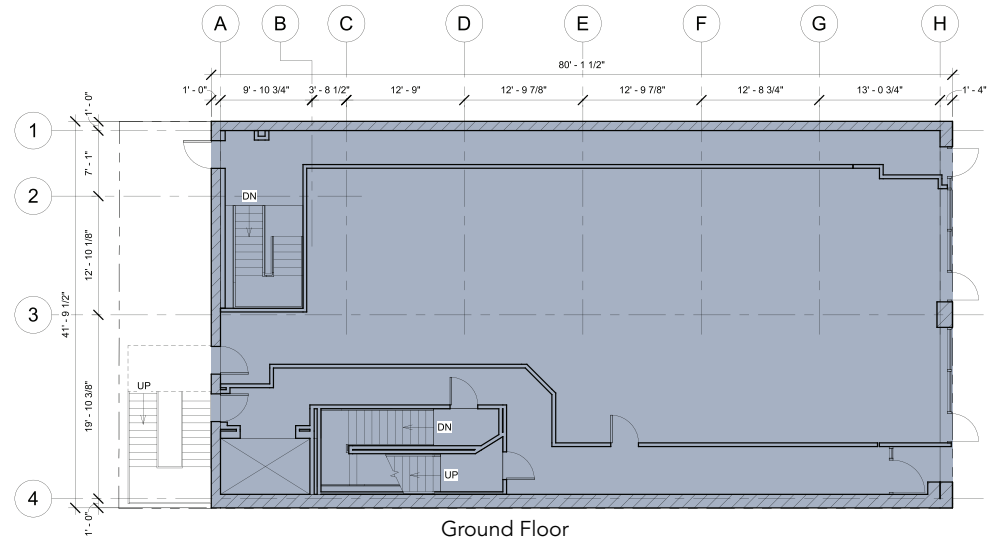
Ground Floor



**3,349 sf**

Lower Level

## FLOOR PLAN

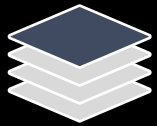


# SPACE AVAILABLE



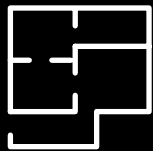
**3,500 sf**

Second Floor



**3,500 sf**

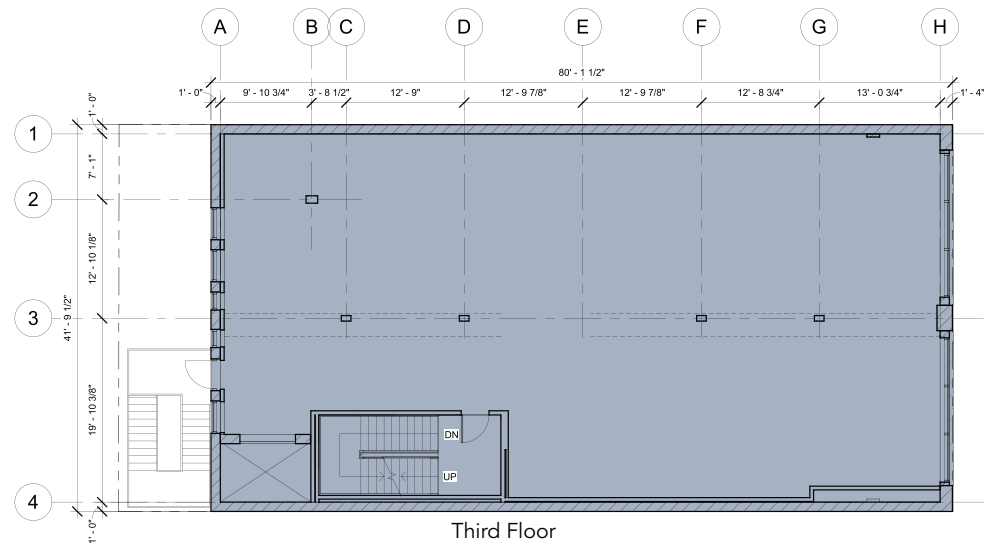
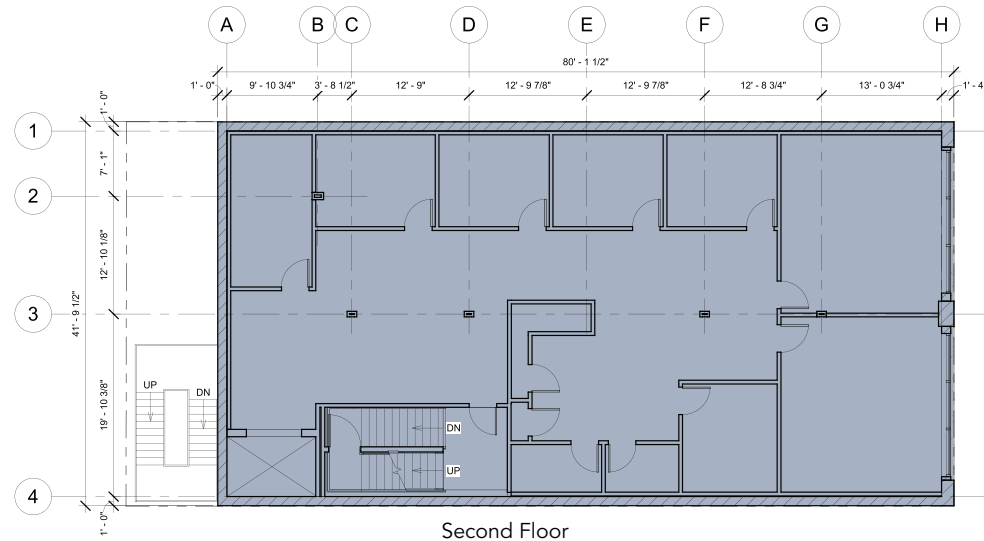
Third Floor



**13,671 sf**

Total

## FLOOR PLAN





CANVAS



**FOR RETAIL  
LEASING INQUIRIES**

**ANTHONY CAMPAGNI**  
ac@canvasrealestate.com  
847.651.8669

**ELAN RASANSKY**  
elan@canvasrealestate.com  
414.380.1555

**MICHAEL WALLACE**  
mwallace@canvasrealestate.com  
614.537.2403

**CANVAS**

2211 N Elston Avenue,  
Suite 307, Chicago  
www.canvasrealestate.com

**FOR OFFICE  
LEASING INQUIRIES**

**MATT PISTORIO**  
847.924.3952  
matt@mad-rose.com

**ADAM PINES**  
847-814-1049  
adam@mad-rose.com

 **MADISON  
ROSE**

20 N Upper Wacker Drive,  
Suite 1150, Chicago  
www.mad-rose.com