

RETAIL SPACE
AVAILABLE FOR LEASE

441 E. Erie St.
STREETERVILLE - CHICAGO



CANVAS

STREETERVILLE

Located at South block of Erie
between McClurg and Lakeshore

HIGHLIGHTS

- Prime Streeterville location at the base of a high rise residential building.
- Excellent proximity to major retail corridors such as Michigan Avenue, the Gold Coast, and the lakefront.
- Dense daytime population and strong pedestrian and vehicle traffic from Northwestern medical campus.

NEIGHBORHOOD RETAILERS

BUONA

CAVA



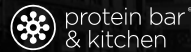
DOUBLETREE
by Hilton

FARMER'S
FRIDGE



Northwestern Memorial
Hospital

Panera
BREAD



DEMOGRAPHICS



81.6k+

Total Population
1 Mile



\$192k+

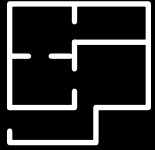
Average HH Income
1 Mile



269k+

Daytime Population
1 Mile

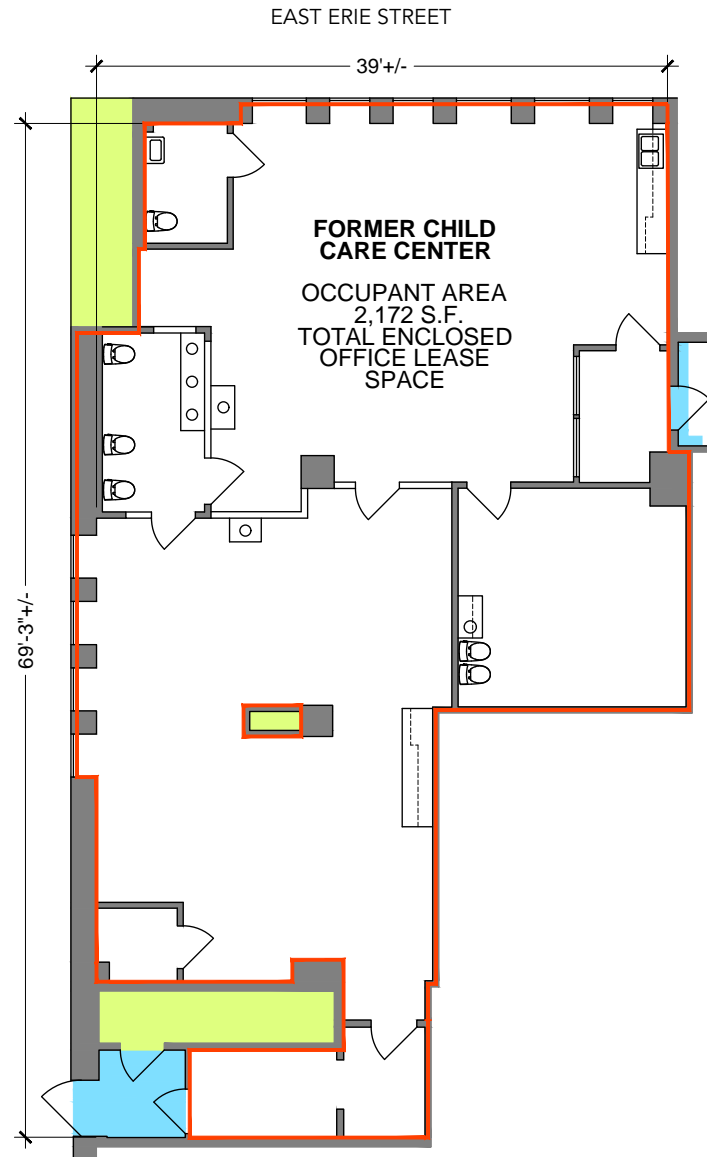
SPACE AVAILABLE



2,172 sf

Total

FLOOR PLAN





FOR MORE INFORMATION, PLEASE CONTACT

CANVAS

ANDREW BECKER

abecker@canvasrealestate.com
312.231.2600

MICHAEL WEXLER

mwexler@canvasrealestate.com
773.426.1759

RACHEL NASATIR

rnatir@canvasrealestate.com
312.361.4282

2211 North Elston Avenue,
Suite 307, Chicago
www.canvasrealestate.com