

MULTIPLE OPPORTUNITIES
AVAILABLE FOR LEASE

Randall Square Shops

1460-1596 S. RANDALL RD., GENEVA



CANVAS

GENEVA

Located at the Southwest corner
of Randall and Fargo

HIGHLIGHTS

- Neighborhood shopping center with small-shop availabilities up to 5,330 SF, ideal for service, retail, or quick-serve users
- Shadow-anchored by a strong line-up of national mid-box tenants
- Strong surrounding demographics with established residential neighborhoods and consistent daily traffic (31,400 VPD - Randall Rd. and 6,200 VPD - Fargo Blvd.)
- Ample surface parking with convenient access and visibility for all shop tenants
- Positioned near national retailers, dining, and essential services, driving steady cross-shopping and repeat visits

SHOPPING CENTER TENANTS

AMERICA'S BEST
CONTACTS & EYEGLASSES

FIVE BELOW

HAND & STONE
MASSAGE AND FACIAL SPA

Marshalls

McALISTER'S
DELI

MEN'S WEARHOUSE

Michaels

NORDSTROM
RACK

OLD NAVY

PET SMART

POPEYES
LOUISIANA KITCHEN

RALLY HOUSE
LOCAL STUFF

ROSS
DRESS FOR LESS

SKECHERS

UNCHARTED

ULTA
BEAUTY

DEMOGRAPHICS



258k+

Total Population
5 Miles



\$126k+

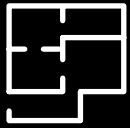
Average HH Income
5 Miles



309k+

Daytime Population
5 Miles

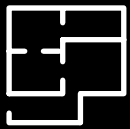
SPACE AVAILABLE



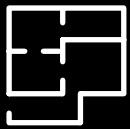
2,297 sf
Space 20



4,130 sf
Space 27



1,200 sf
Space 18

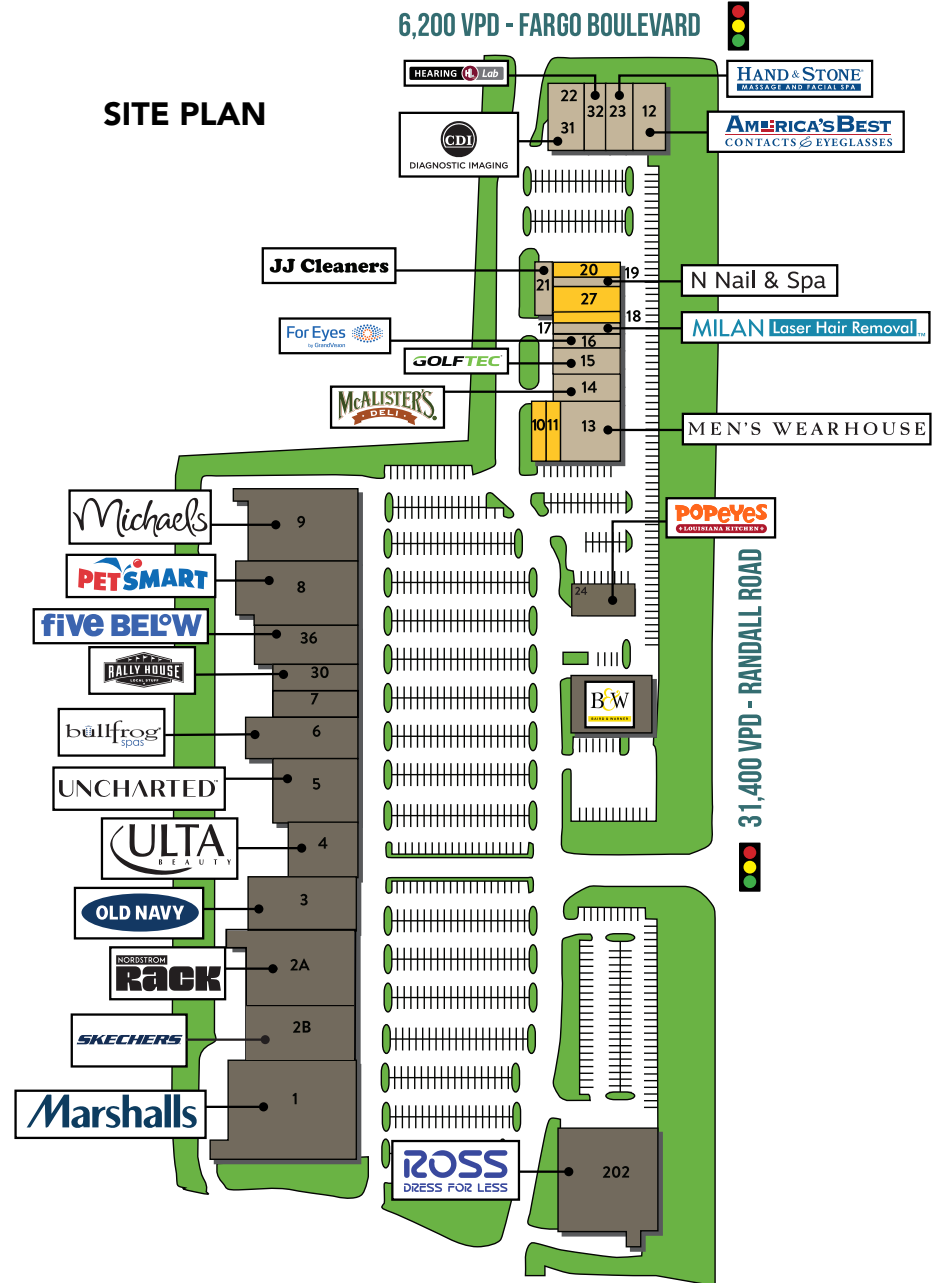


1,578 sf
Space 11

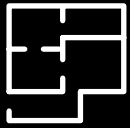


1,200 sf
Space 10

SITE PLAN



SPACE AVAILABLE



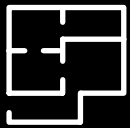
2,297 sf

Space 20



4,130 sf

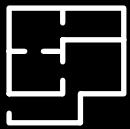
Space 27



1,200 sf

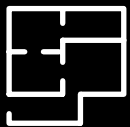
Space 18

27 and 18 can be combined for 5,330 SF



1,578 sf

Space 11



1,200 sf

Space 10

10 and 11 can be combined for 2,778 SF

SITE PLAN

6,200 VPD - FARGO BOULEVARD

