

RETAIL SPACE
FOR LEASE

1574 N. Kingsbury St.
LINCOLN PARK - CHICAGO



CANVAS

LINCOLN PARK

Located on the Northwest corner of Kingsbury & Weed

HIGHLIGHTS

- Rare large footprint opportunity in the North & Clybourn corridor-- 13,071 SF ground floor + 5,135 SF mezzanine
- Logical demising scenarios will be considered
- 130 feet of prominent frontage along N Kingsbury, offering exceptional visibility and branding opportunities
- Outstanding signage presence, including multiple monument sign opportunities
- Signalized intersection of N Kingsbury, N Sheffield, & W Weed
- Ample parking provided via a large shared surface lot and abundant street parking

NEIGHBORHOOD RETAILERS



DEMOGRAPHICS



50.7k+

Total Population
1 Mile



\$214k+

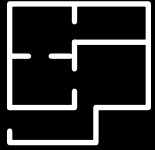
Average HH Income
1 Mile



55.8k+

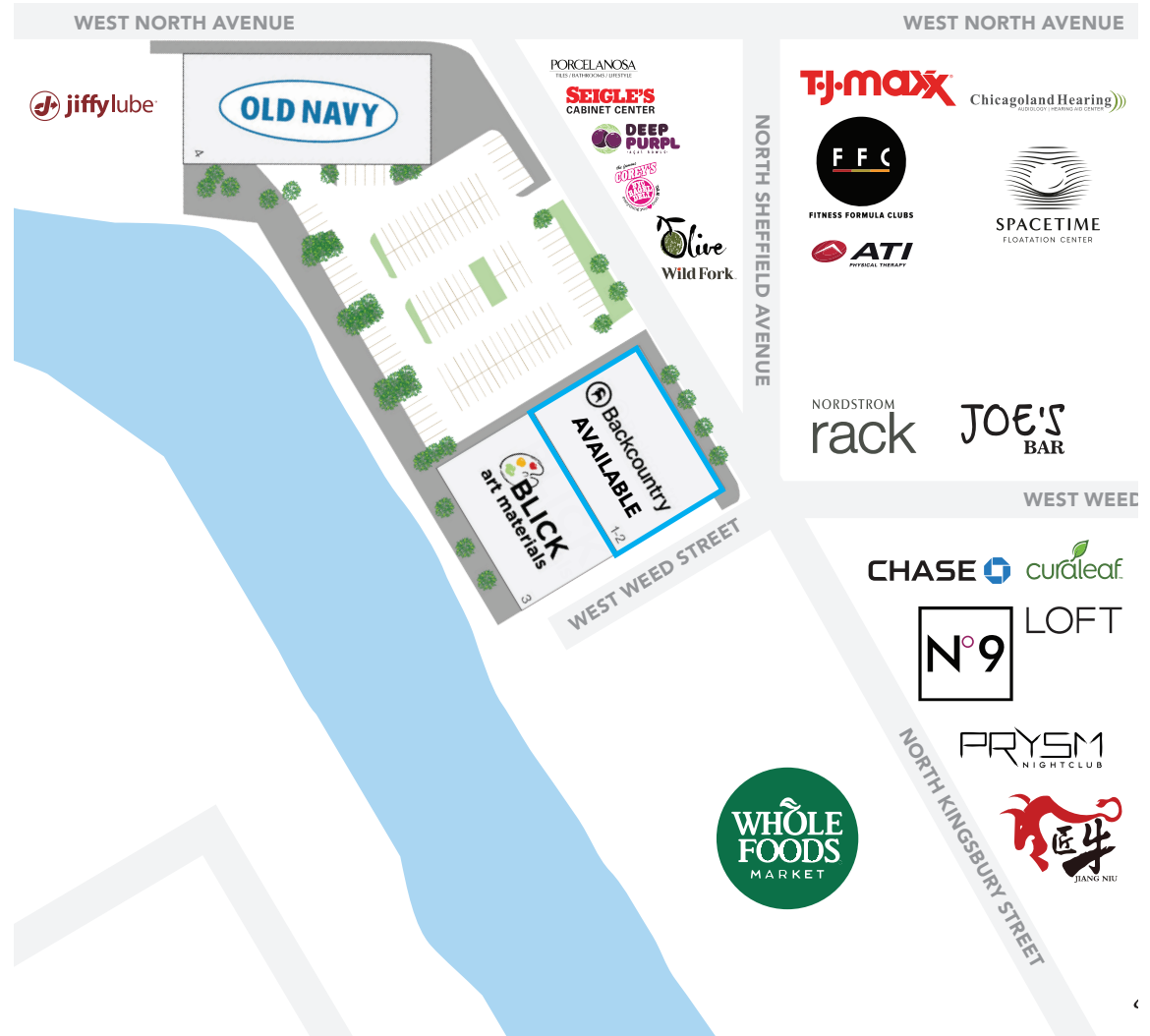
Daytime Population
1 Mile

SPACE AVAILABLE

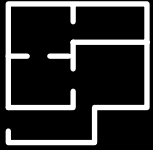


18,206 sf
Total

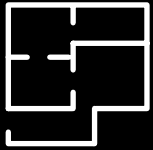
SITE PLAN



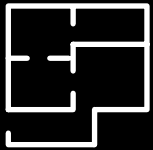
SPACE AVAILABLE



13,071 sf
Ground Floor

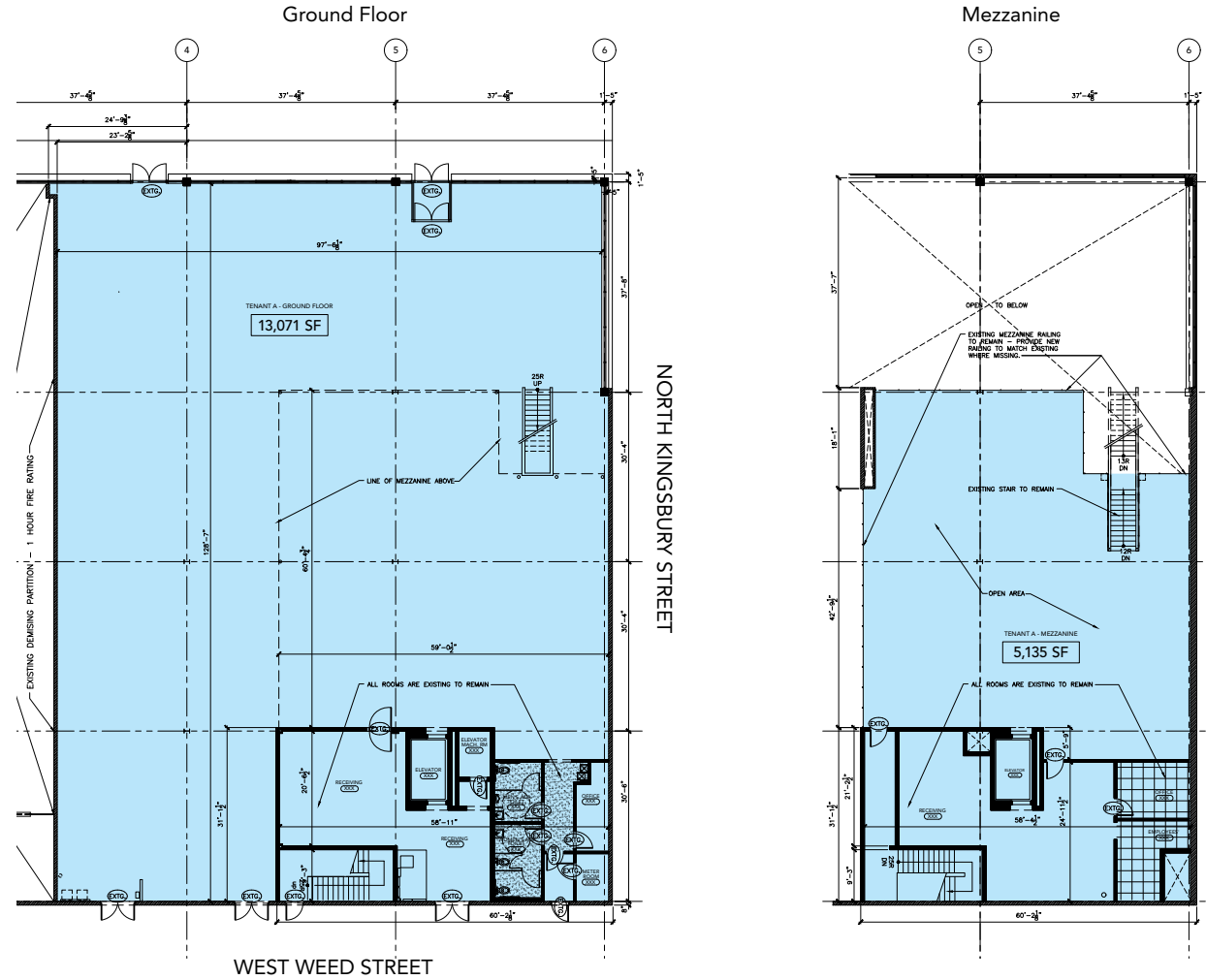


5,135 sf
Mezzanine

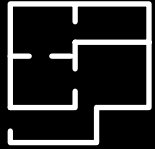


18,206 sf
Total

FLOOR PLAN

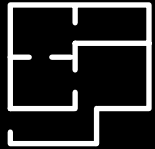


SPACE AVAILABLE



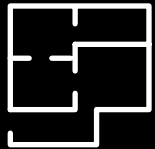
5,083 sf

Space A



7,148 sf

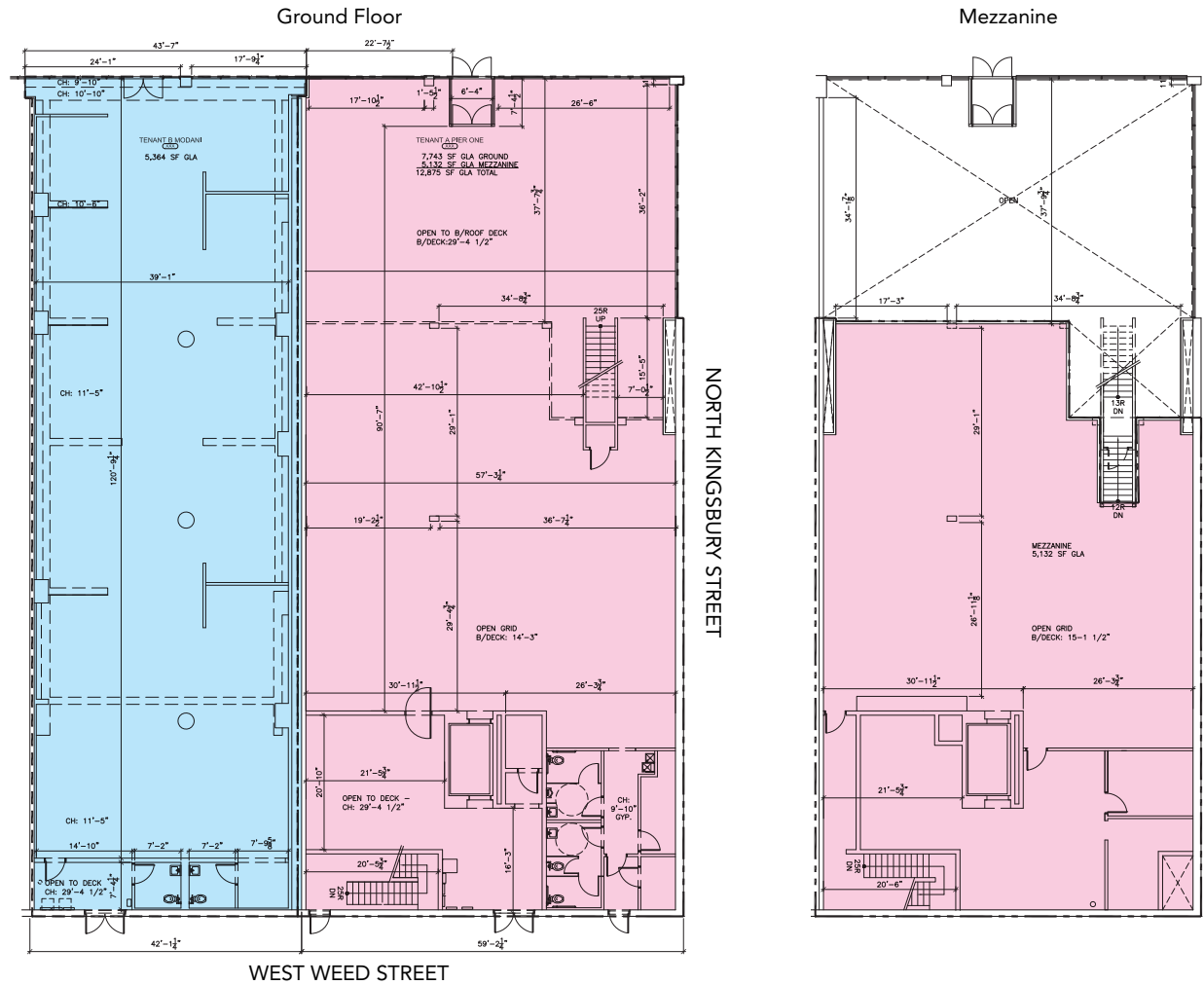
Space B

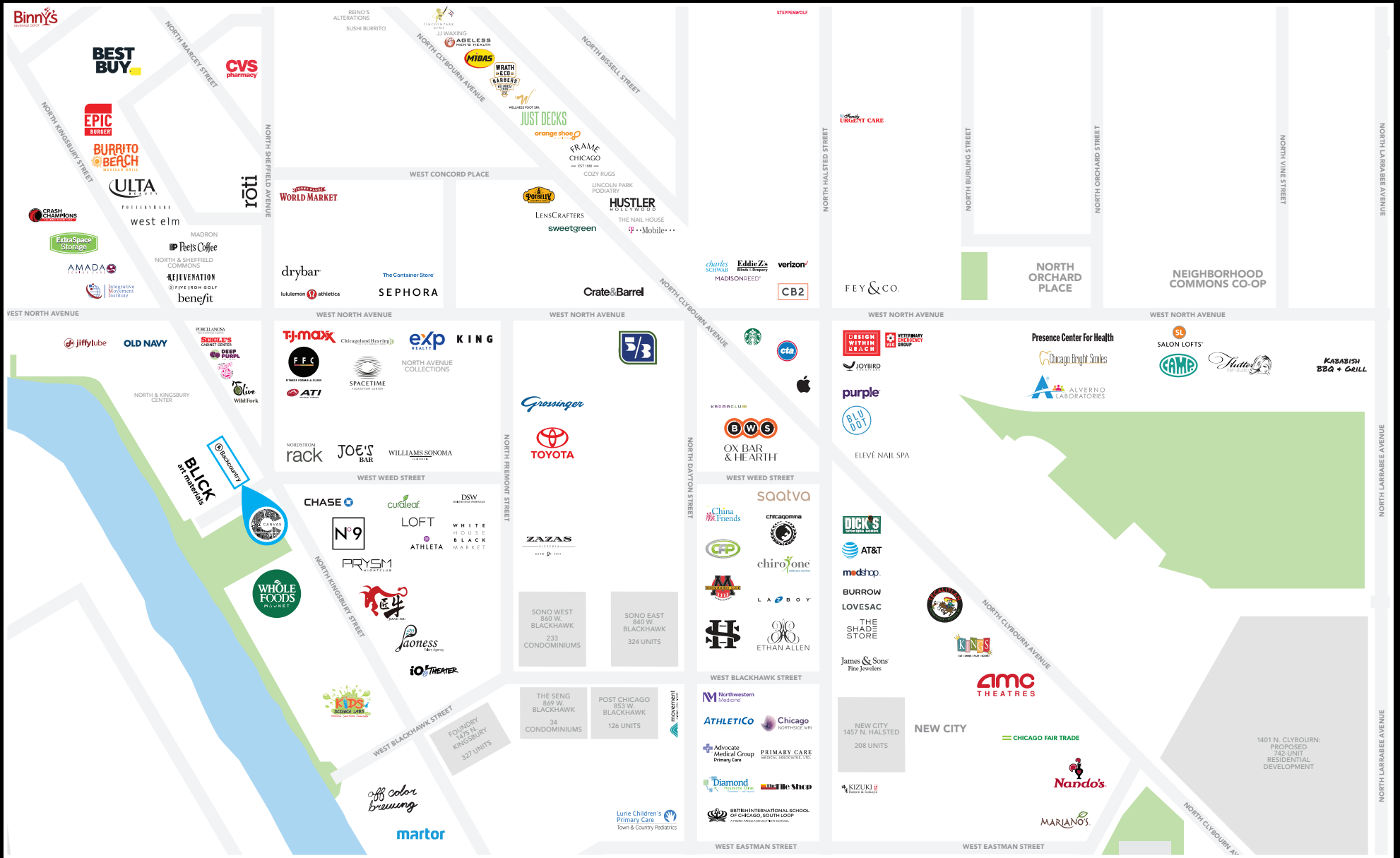


5,135 sf

Space B Mezzanine

DEMISING PLAN





FOR MORE INFORMATION, PLEASE CONTACT

CANVAS

ANTHONY CAMPAGNI
 ac@canvasrealestate.com
 847.651.8669

ELAN RASANSKY
 elan@canvasrealestate.com
 414.380.1555

MICHAEL WALLACE
 mwallace@canvasrealestate.com
 614.537.2403

2211 North Elston Avenue,
 Suite 307, Chicago
 www.canvasrealestate.com