

RESTAURANT SPACE
AVAILABLE FOR LEASE

1160 N. Dearborn St.
GOLD COAST - CHICAGO



CANVAS

GOLD COAST

Located at the West block of Dearborn
between Division and Elm

HIGHLIGHTS

- A rare standalone second generation restaurant in the heart of the Gold Coast — walkable, vibrant, high foot traffic
- Bi-level layout with PDR and lounge areas, existing bar, and outdoor seating opportunity
- Surrounded by top tier restaurants & nightlife destinations, luxury retail, and hotels supported by tourism, dense residential and high-income households

NEIGHBORHOOD RETAILERS

BIGGS
CHICAGO

BLUE DOOR
KITCHEN & GARDEN



eduardos
ENOTECA

GIBSONS
RESTAURANT GROUP

GOTHAM
new York bagels & eats



LA STORIA
RISTORANTE

MAPLE & ASH

RH
RESTORATION HARDWARE

SPARROW



DEMOGRAPHICS



98.9k+
Total Population
1 Mile

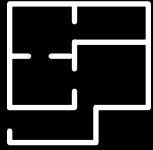


\$183k+
Average HH Income
1 Mile



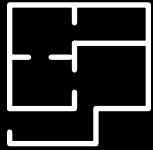
169k+
Daytime Population
1 Mile

SPACE AVAILABLE



6,200 sf

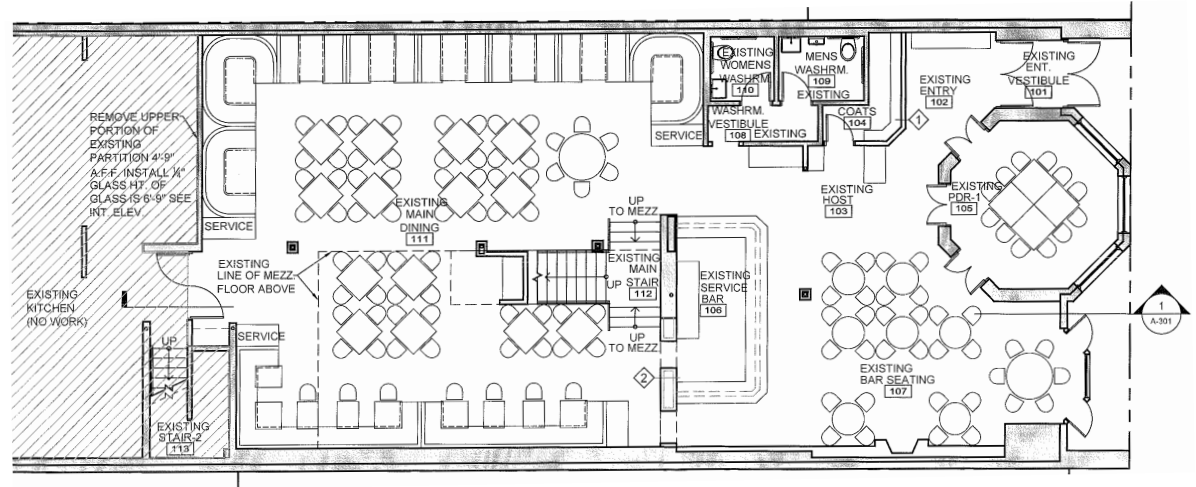
Ground Floor



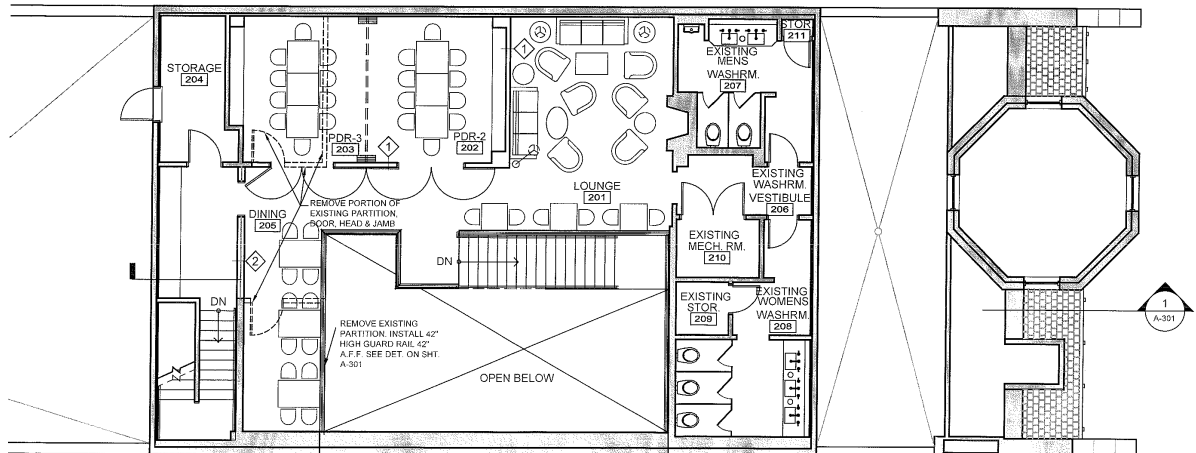
1,000 sf

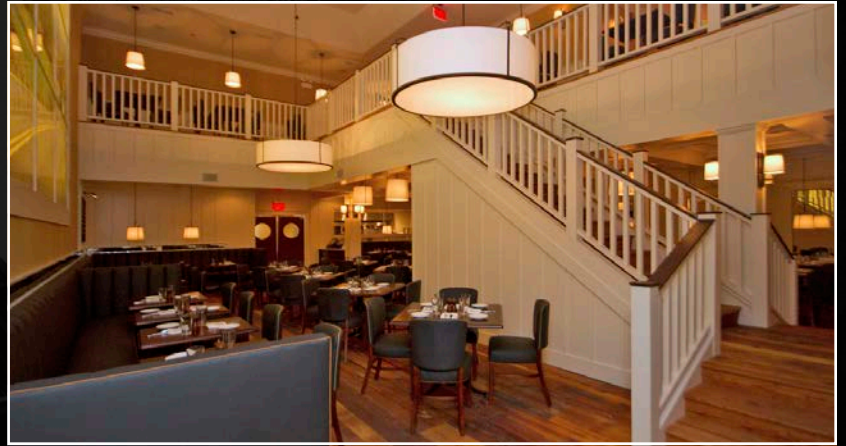
Mezzanine

First Floor



Mezzanine





CANVAS



FOR MORE INFORMATION, PLEASE CONTACT

ANTHONY CAMPAGNI
 ac@canvasrealestate.com
 847.651.8669

ELAN RASANSKY
 elan@canvasrealestate.com
 414.380.1555

QUINN THOMAS
 qthomas@canvasrealestate.com
 847.651.5589

CANVAS

2211 North Elston Avenue,
 Suite 307, Chicago
 www.canvasrealestate.com