

RETAIL/RESTAURANT
SPACE FOR LEASE

1235 & 1257 N. Ashland Ave.

WICKER PARK - CHICAGO



1235 N. ASHLAND



1257 N. ASHLAND

CANVAS

WICKER PARK

Located on the East block of Ashland
between Blackhawk & Milwaukee

HIGHLIGHTS

- Multiple Opportunities
- Prime, brand new, ground floor retail spaces featuring a flexible floor plan adaptable for boutique retail, fitness, or high-end service
- Sleek, modern aesthetic with a classic brick facade, premium black metal accents, and more than 30+ feet of floor-to-ceiling window frontage
- Built-in customer base from 2 luxury residential units just above both spaces
- Transit oriented location just steps from Division Blue Line Station and nearby bus stops

NEIGHBORHOOD RETAILERS

benefit

Chick-fil-A

DUNKIN'

ExtraSpace
Storage

Great Clips®

HOUSE OF
HOOPS
by Foot Locker

INNOVATIVE
Care

Jewel
Osco.

LOWE'S
Home Improvement Warehouse

PET SUPPLIES PLUS

POTBELLY
SANDWICH SHOP

SUBWAY

T-Mobile

ULTA
BEAUTY

verizon✓

DEMOGRAPHICS



53.7k+

Total Population
1 Mile



\$195k+

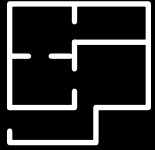
Average HH Income
1 Mile



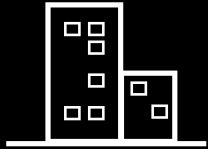
56.5k+

Daytime Population
1 Mile

SPACE AVAILABLE

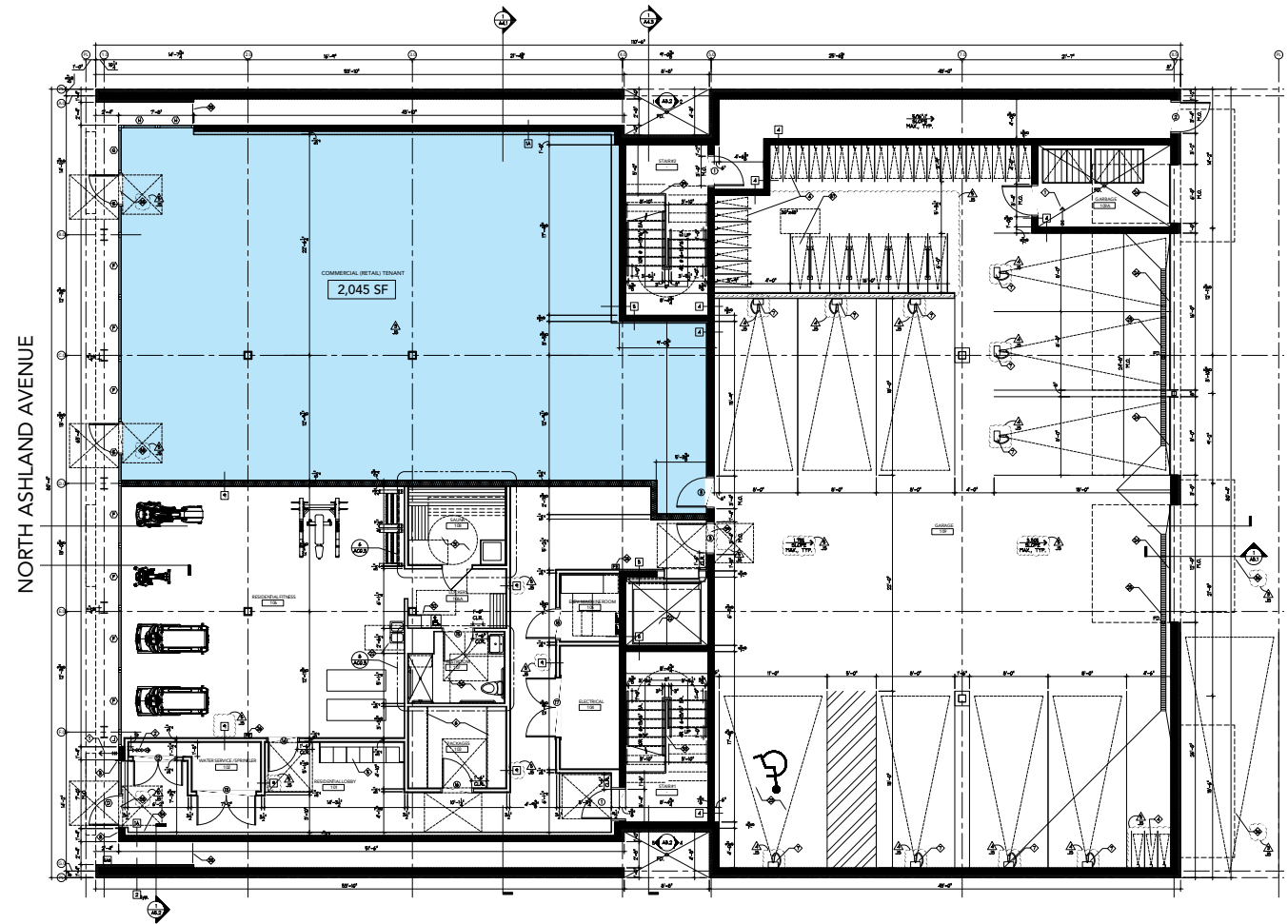


2,045 sf
Ground Floor

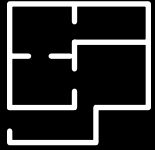


35'-5 13/16"
Frontage on Ashland

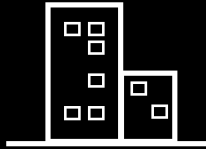
1257 N. ASHLAND FLOOR PLAN



SPACE AVAILABLE

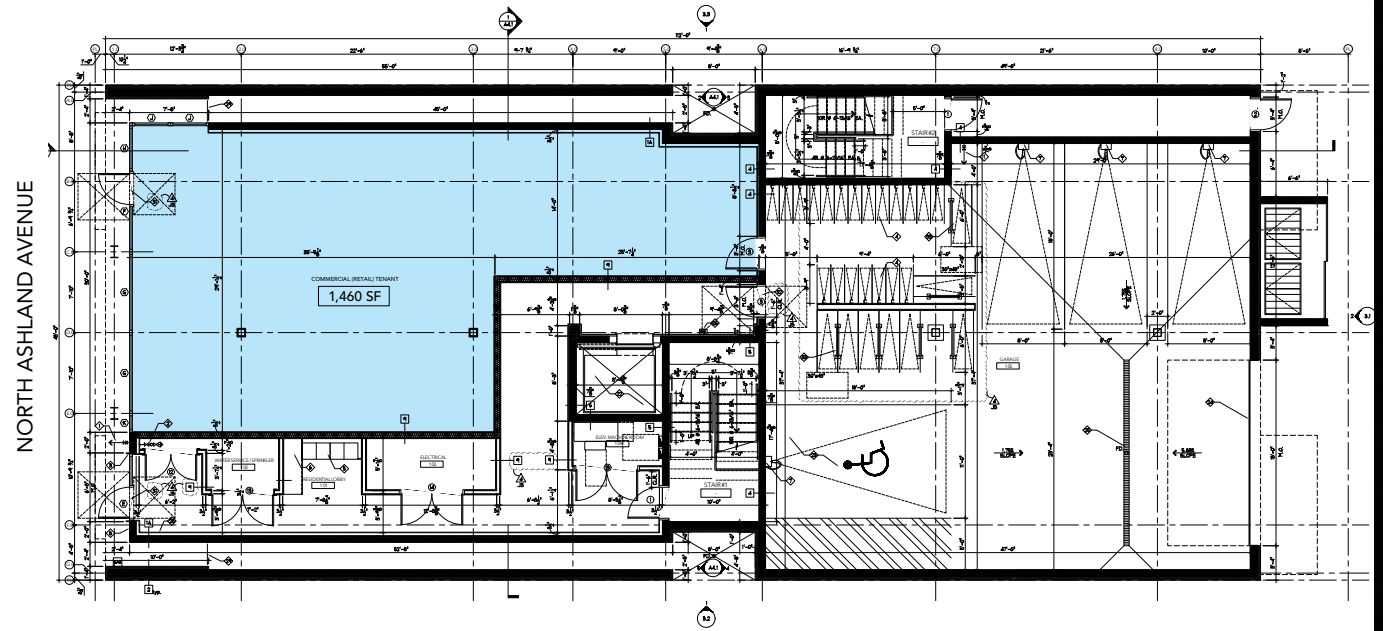


1,460 sf
Ground Floor



30'
Frontage on Ashland

1235 N. ASHLAND FLOOR PLAN





FOR MORE INFORMATION, PLEASE CONTACT

ANDREW BECKER
 abecker@canvasrealestate.com
 312.231.2600

RACHEL NASATIR
 rnasatir@canvasrealestate.com
 312.361.4282

CANVAS

2211 North Elston Avenue,
 Suite 307, Chicago
 www.canvasrealestate.com