

RETAIL SPACE
AVAILABLE FOR LEASE

114 N. Aberdeen St. FULTON MARKET - CHICAGO



CANVAS

FULTON MARKET

Located at the West block of Aberdeen between Randolph & Washington

HIGHLIGHTS

- Located at the west block between Randolph and Washington, this extraordinary opportunity is one of only a few left in the country's hottest F&B market - Chicago's Fulton Market district.
- The site is adjacent to McDonald's Corporate Office and around the corner from Hyatt House Chicago.

NEIGHBORHOOD RETAILERS



DEMOGRAPHICS



64.0k+

Total Population
1 Mile



\$184k+

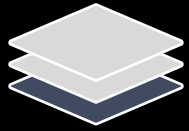
Average HH Income
1 Mile



215k+

Daytime Population
1 Mile

SPACE AVAILABLE



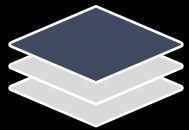
1,621 sf

Lower Level



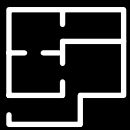
2,008 sf

Ground Level



2,162 sf

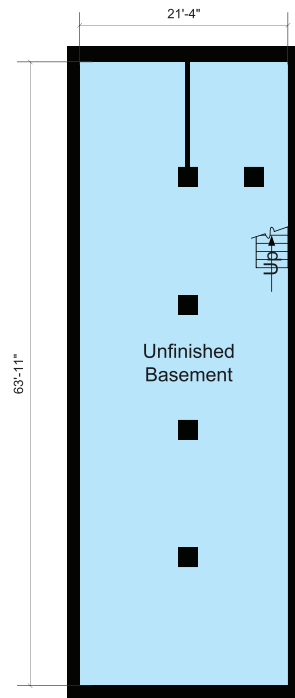
Second Level



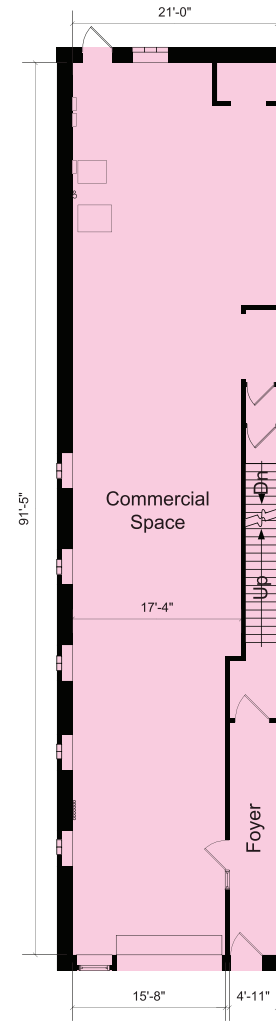
5,791 sf

Total

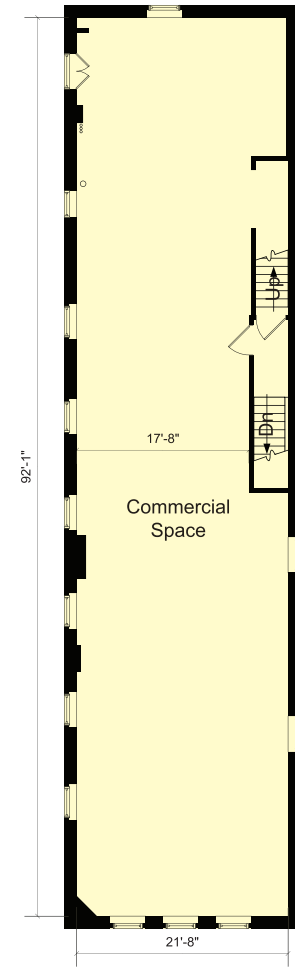
FLOOR PLAN



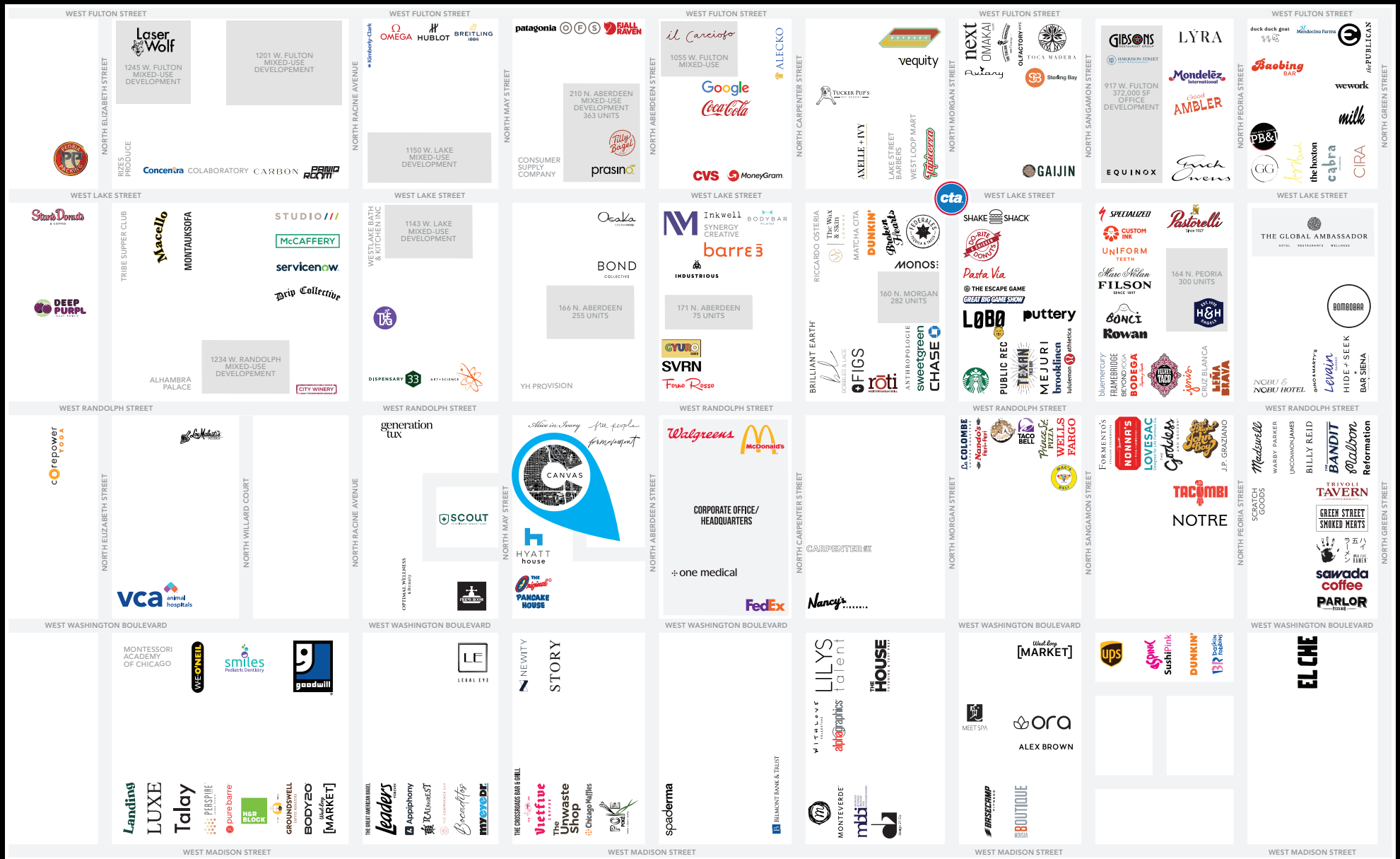
Lower Level



Ground Level



Second Level



FOR MORE INFORMATION, PLEASE CONTACT

ANTHONY CAMPAGNI
 ac@canvasrealestate.com
 847.651.8669

ELAN RASANSKY
 elan@canvasrealestate.com
 414.380.1555

MICHAEL WALLACE
 mwallace@canvasrealestate.com
 614.537.2403

CANVAS

2211 North Elston Avenue,
 Suite 307, Chicago
 www.canvasrealestate.com