

RESTAURANT SPACE
AVAILABLE FOR LEASE

1624 N. Damen Ave.
WICKER PARK - CHICAGO



WICKER PARK

Located at the West block of Damen
between North & Concord

HIGHLIGHTS

- Brand-new restaurant space (formerly occupied by Guzman y Gomez) available with black iron
- Rare opportunity to backfill a fully built-out 2,491 SF 2nd-gen restaurant space along Bucktown's Damen corridor
- Highly visible location with strong pedestrian traffic just steps from the Damen Blue Line Station and The 606
- Momentum continues in the submarket with recent lease signings from Call Your Mother Deli, Hotel Chocolat, and Shang Noodle

NEIGHBORHOOD RETAILERS

Aēsop®

BARNES
& NOBLE

BAGGU

BondVet

bluemercury



SHINOLA

VanLeeuwen

WELLS
FARGO

DEMOGRAPHICS



66.7k+

Total Population
1 Mile



\$177k+

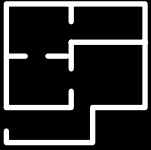
Average HH Income
1 Mile



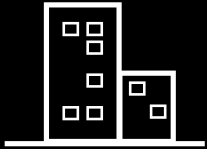
54.3k+

Daytime Population
1 Mile

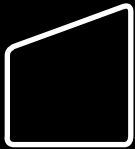
SPACE AVAILABLE



2,491 sf
Total

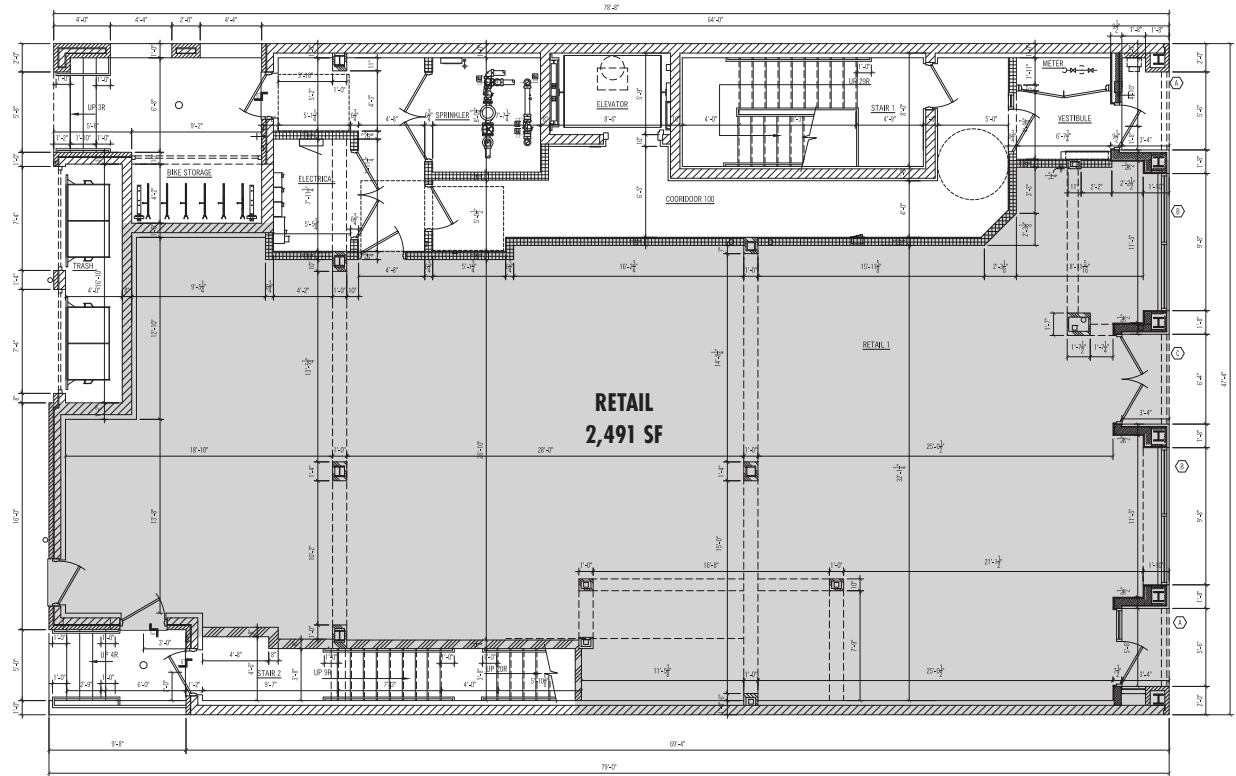


37'4"
Frontage on N. Damen



17'
Total Ceiling Height

EXISTING LAYOUT



NORTH DAMEN AVENUE





FOR MORE INFORMATION, PLEASE CONTACT

CANVAS

ANTHONY CAMPAGNI
 ac@canvasrealestate.com
 847.651.8669

ELAN RASANSKY
 elan@canvasrealestate.com
 414.380.1555

MICHAEL WALLACE
 mwallace@canvasrealestate.com
 614.537.2403

2211 North Elston Avenue,
 Suite 307, Chicago
 www.canvasrealestate.com